

Discovery-Corp Enterprises Inc.

Engaged in the exploration of gold and copper

The Rock Creek Ranch gold property is in Nevada,
U.S.A.

The Galaxy gold & copper property is in British
Columbia, Canada

Both properties in established producing areas



Rock Creek Ranch Gold Property

One of the world's richest gold producing areas

The mines in this area (the Turquoise Ridge, Getchell, Preble and Adelaide) host a total of over 15 million ounces of gold

Exploration in the 33 square mile Rock Creek Ranch, has revealed a significant gold anomaly that suggests the potential for a large deposit at depth

Discovery-Corp is pursuing joint venture opportunities





Reserves: 62.4 Mt @ 2.26 g/t Au
Resource: 23.44 Mt @ 1.43 g/t Au

Reserves: 11.24 Mt @ 15.70 g/t Au
Resource: 3.29 Mt @ 14.02 g/t Au

Twin Creeks
(North Chimney
Rabbit Creek
South Chimney)

**Turquoise Ridge
Getchell**

Summer Camp

Mag
Felix Canyon

Pinson

Resource: 5.88 Mt @ 12.88 g/t Au

Preble

Resource: 3.16 Mt @ 3.19 g/t Au

**Rock Creek
Ranch Project**

**Battle
Mountain
Gold
Trend**

Resource: 3 Mt @ 1.10 g/t Au

Lone Tree

Adelaide

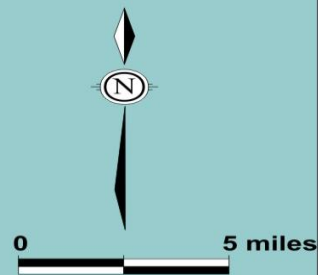
Resource: 0.585 Mt @ 1.47 g/t Au, 45 g/t Ag

**Marigold/
Millennium**

Reserves: 64.26Mt @ 0.69 g/t Au
Resource: 51.68Mt @ 0.69 g/t Au

LEGEND

-  Cambrian Preble Formation
-  Gold Deposit



Galaxy Gold & Copper Property

Discovery-Corp owns 100% of the Galaxy property in New Afton

The Afton gold copper mine was operated year round by Teck (our former joint venture partner) from 1977 to 1997

The infrastructure includes an airport, two railways and two highways



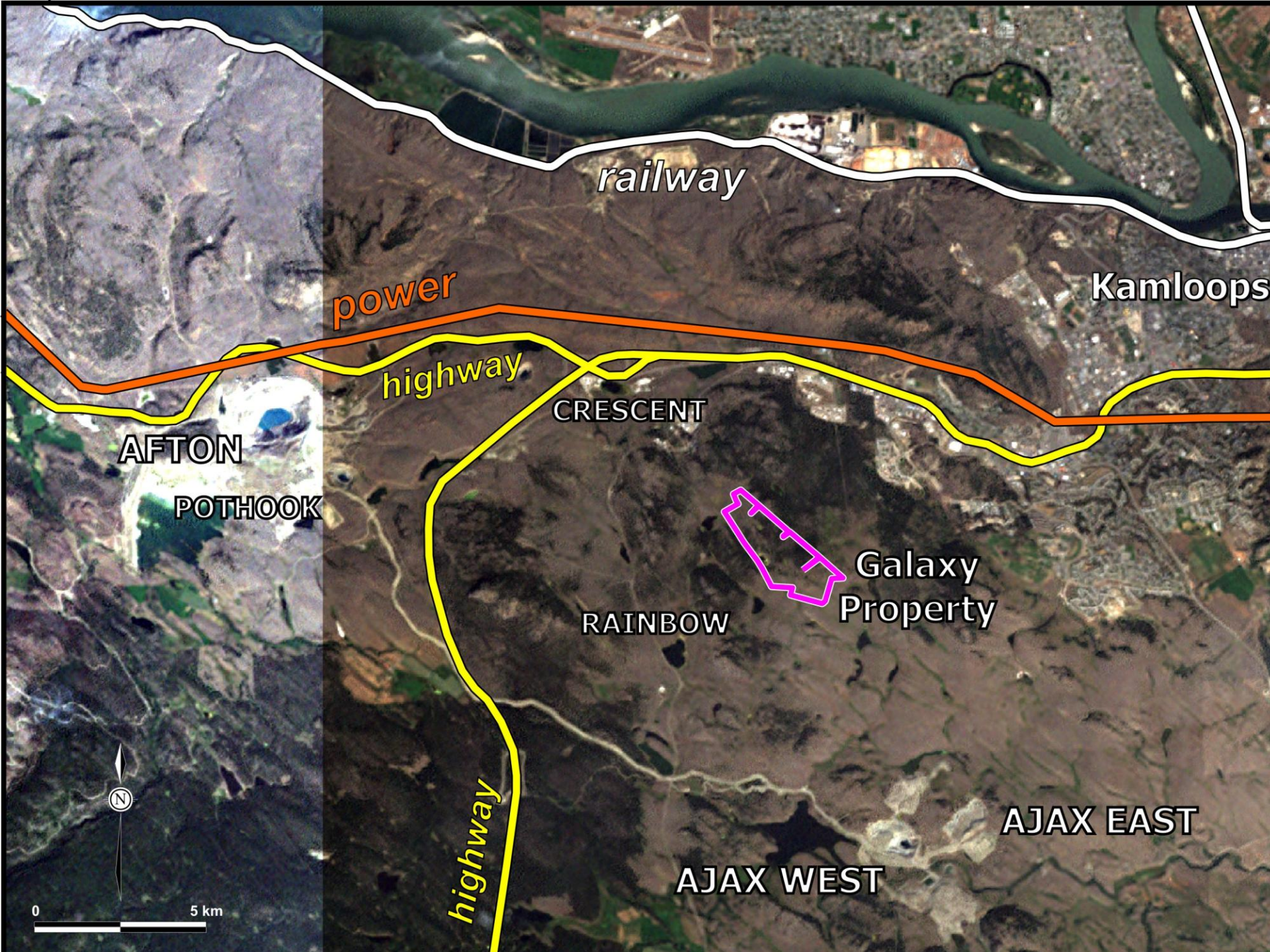
Galaxy Gold & Copper Property

New Gold is planning for production in 2012

The Galaxy is already connected to New Gold by a haul road underpass

Discovery-Corp's other neighbor Abacus is preparing a bankable feasibility study





railway

Kamloops

power

highway

CRESCENT

AFTON

POTHOOK

Galaxy
Property

RAINBOW

AJAX EAST

AJAX WEST

highway



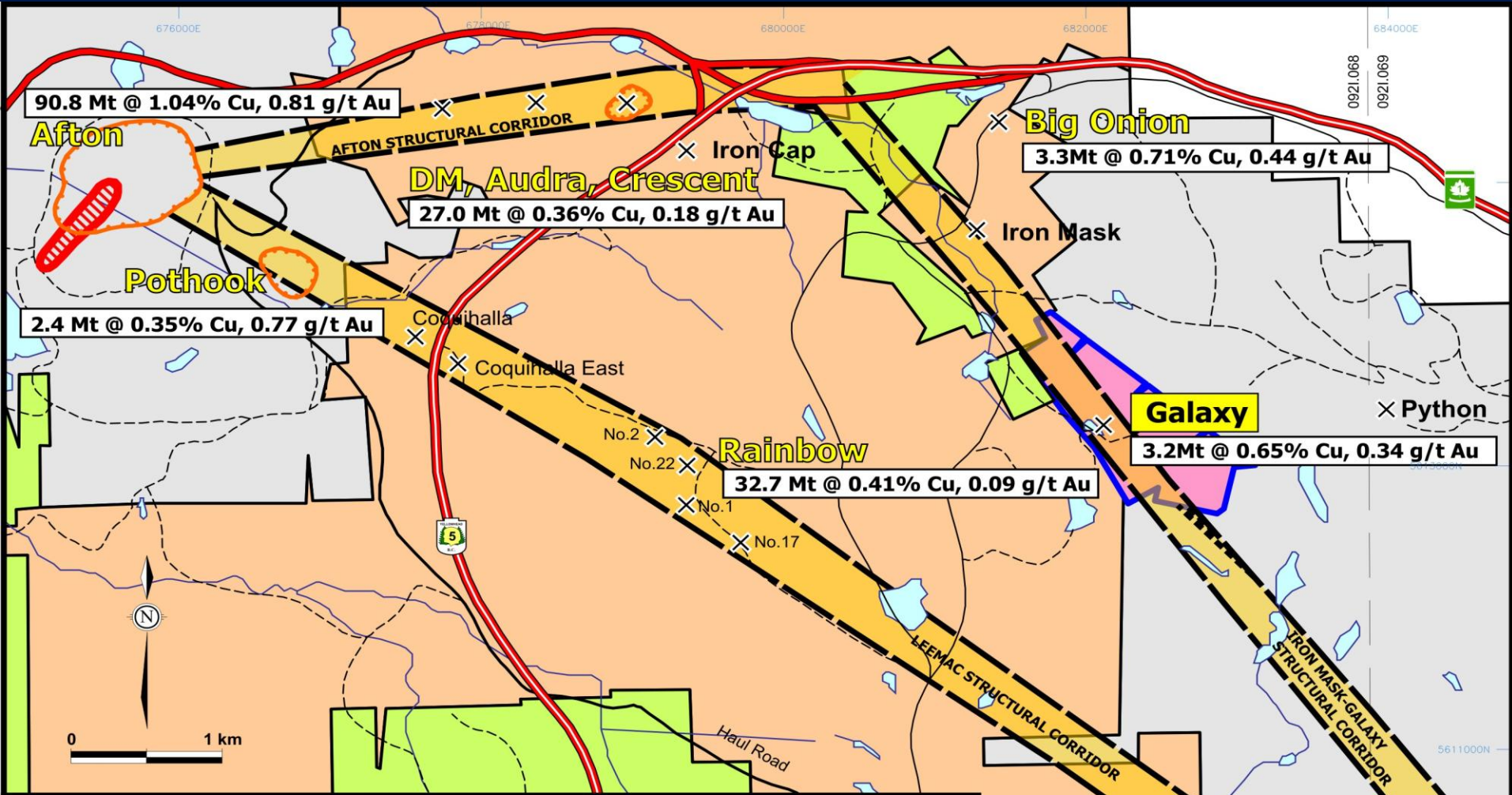
0 5 km

Galaxy Gold & Copper Property

Historical estimates in the 1990s ranged from 1.7 million tonnes grading 0.39% copper and 0.13 grams of gold per tonne to 3.2 million tonnes grading 0.65% copper and 0.34 grams of gold per tonne

1990 reverse circulation drilling returned up to 67 meters of 1.14% copper and 0.21 grams per tonne gold. These resource estimates are historical and not 43-101 compliant.

Galaxy Gold & Copper Property



LEGEND

- Discovery-Corp property
- Abacus property
- New Gold property
- Other properties

- Open pit
- x Deposit or prospect
- Favourable structural corridor

Galaxy Gold & Copper Property

Discovery-Corp has obtained the Galaxy 130 drill hole database from the former operator of Afton

Last year Discovery-Corp obtained original drill logs confirming drilling by Teck stopped in mineralization

Discovery-Corp used the historical data to develop a 3D model of the deposit to provide additional drill targets to expand the resource



Galaxy Gold & Copper Property

Mineralization at the Galaxy Zone are well established by drilling

There is potential for additional mineralization on-strike to the southeast and northwest.

There is also potential to find the offset root of the Galaxy deposit, in the footwall of the thrust fault that truncates the mineralization at depth

Discovery-Corp Enterprises Inc.

- No Debt
- Sufficient working capital
- No outstanding work commitments
- Both adjoining properties planning production



Discovery-Corp Enterprises Inc.

Senior Management:

Alex Pannu, LL.B

- President and CEO

Iain Brown, B. Comm., M.Sc.

- Chief Financial Officer

Greg Hawkins, P. Geo, M.Sc.

- Geologist



Discovery-Corp Enterprises Inc.

TRANSFER AGENT:

- Pacific Equity Partners

AUDITOR:

- Smythe Ratcliffe
PKF International

LEGAL COUNSEL:

- Richards Buell Sutton

BANKER:

- Bank of Montreal,
Main Branch

Discovery-Corp Enterprises Inc.

- TSX Venture Exchange
- Trading Symbol DCY.V

Total Shares Outstanding: 36 million

Fully Diluted: 36 million



Discovery-Corp Enterprises Inc.

For further information

investors@disovery-corp.com

Iain Brown
(778) 371 – 9936

THANK YOU FOR YOUR TIME

