

# Discovery-Corp Enterprises Inc.

Engaged in the exploration of gold and copper

The Rock Creek Ranch gold property is in Nevada,  
U.S.A.

The Galaxy gold & copper property is in British  
Columbia, Canada

Both properties in established producing areas



# Rock Creek Ranch Gold Property

One of the world's richest gold producing areas

The mines in this area (the Turquoise Ridge, Getchell, Preble and Adelaide) host a total of over 15 million ounces of gold

Exploration in the 33 square mile Rock Creek Ranch, has revealed a significant gold anomaly that suggests the potential for a large deposit at depth

Discovery-Corp is pursuing joint venture opportunities





Reserves: 62.4 Mt @ 2.26 g/t Au  
 Resource: 23.44 Mt @ 1.43 g/t Au

**Twin Creeks**  
 (North Chimney  
 Rabbit Creek  
 South Chimney)

Reserves: 11.24 Mt @ 15.70 g/t Au  
 Resource: 3.29 Mt @ 14.02 g/t Au

**Turquoise Ridge  
 Getchell**



Summer Camp

Mag  
 Felix Canyon

**Pinson**

Resource: 5.88 Mt @ 12.88 g/t Au

**Preble**

Resource: 3.16 Mt @ 3.19 g/t Au

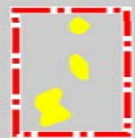
**Battle  
 Mountain  
 Gold  
 Trend**

Resource: 3 Mt @ 1.10 g/t Au

**Lone Tree**

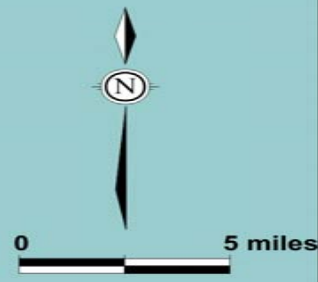
**Adelaide**

Resource: 0.585 Mt @ 1.47 g/t Au, 45 g/t Ag



**Marigold/  
 Millennium**

Reserves: 64.26Mt @ 0.69 g/t Au  
 Resource: 51.68Mt @ 0.69 g/t Au



*Getchell Gold Trend*

**Rock Creek  
 Ranch Project**

**LEGEND**

- Cambrian Preble Formation
- Gold Deposit

# Galaxy Gold & Copper Property

The Galaxy property is in the Afton Mining Camp

The Afton gold copper mine was operated year round by Teck (our former joint venture partner) from 1977 to 1997

The infrastructure includes airport, 2 national railways, 2 highways

# Galaxy Gold & Copper Property

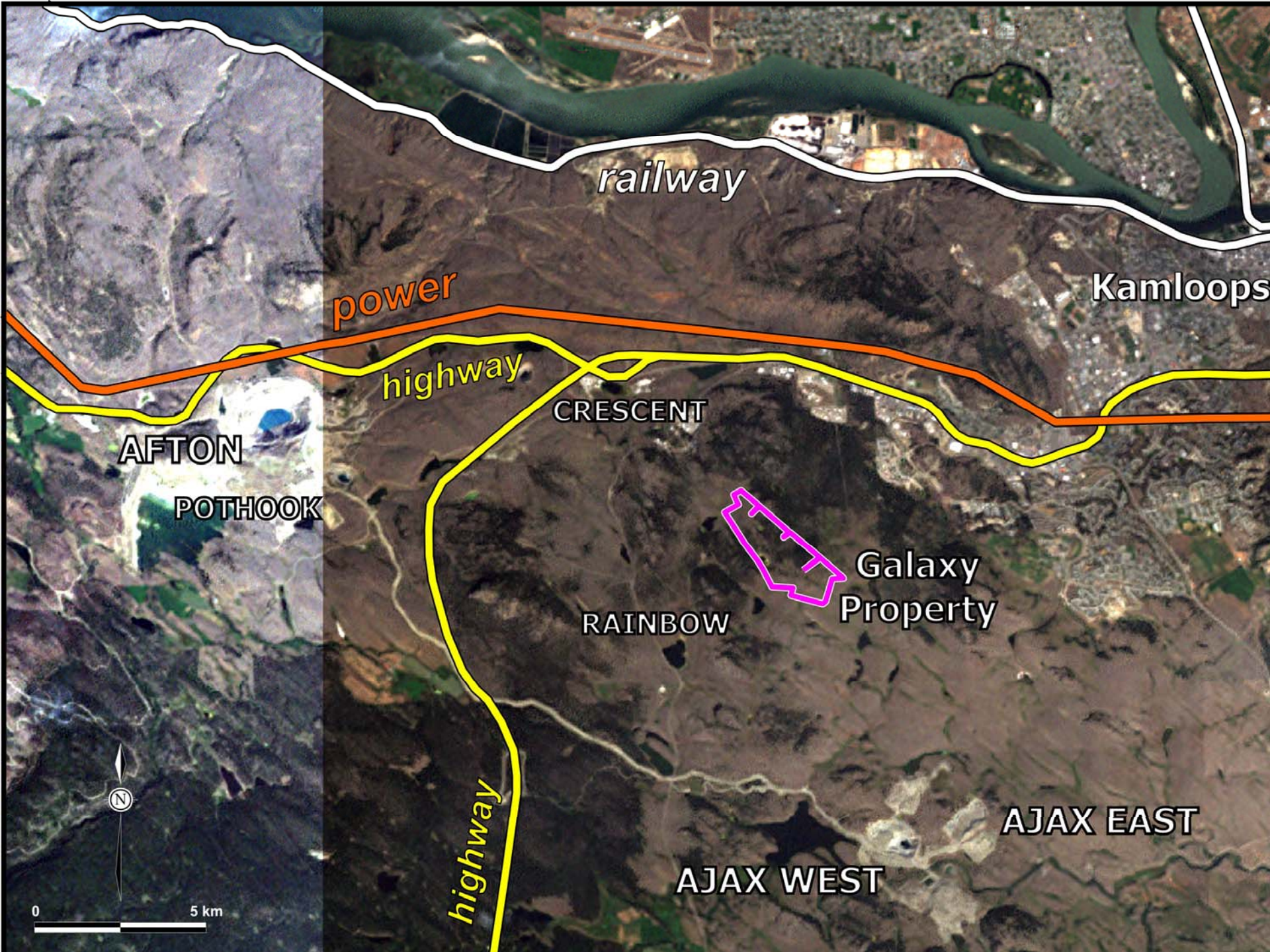
The Galaxy is already connected to New Gold by a haul road underpass

New Gold is building a mill with production planned for 2012

Discovery sold Abacus our Rainbow Property and Discovery owns Abacus shares

Abacus is planning production in 2013





railway

Kamloops

power

highway

CRESCENT

AFTON

POTHOOK

Galaxy  
Property

RAINBOW

AJAX EAST

AJAX WEST

highway



0 5 km

# Galaxy Gold & Copper Property

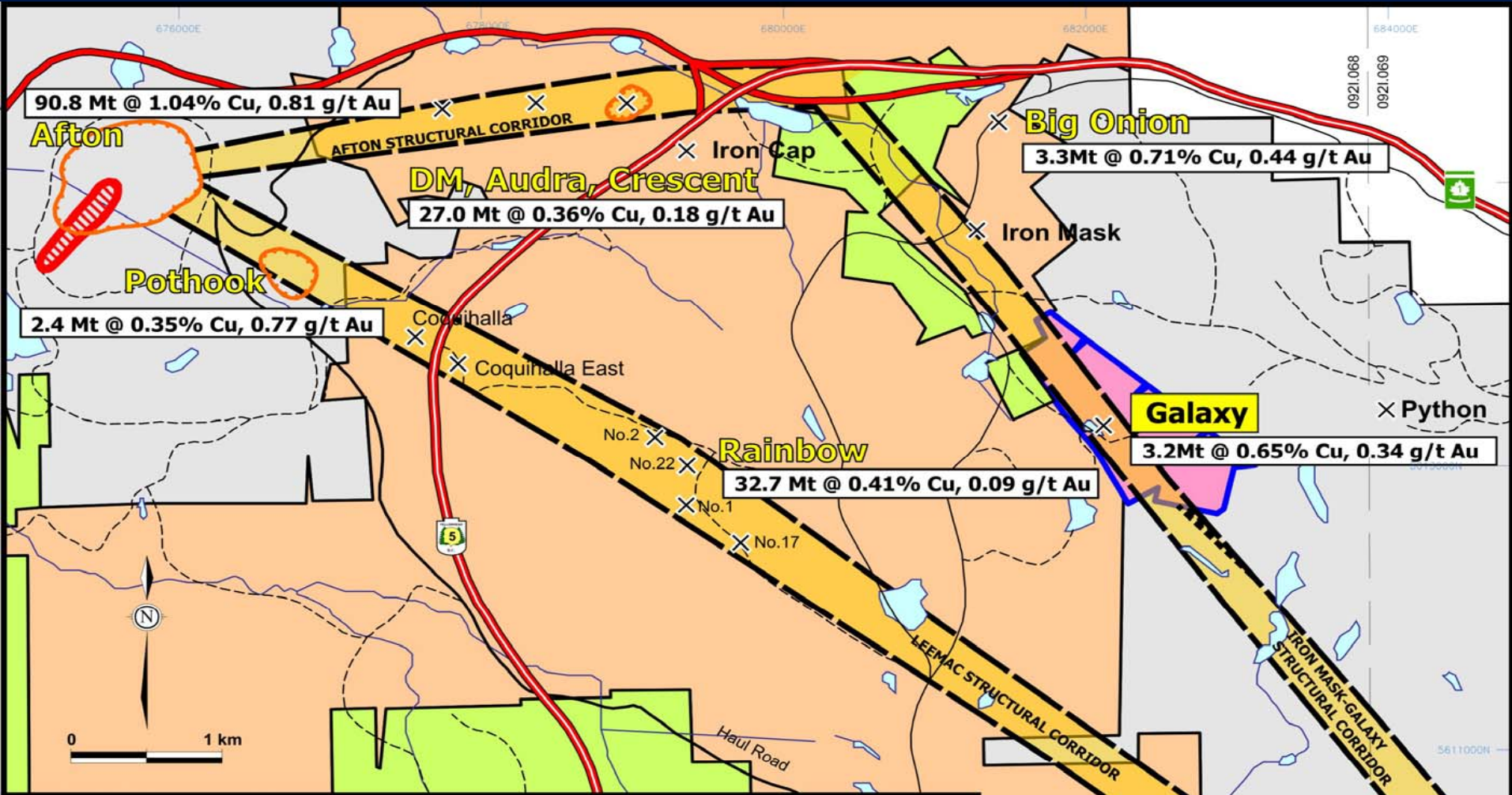
Discovery-Corp has obtained the Galaxy 130 drill hole database from the former operator of Afton

Historical estimates in the 1990s ranged from 1.7 million tonnes grading 0.39% copper and 0.13 grams of gold per tonne to 3.2 million tonnes grading 0.65% copper and 0.34 grams of gold per tonne

1990 drilling returned up to 67 meters of 1.14% copper and 0.21 grams per tonne gold



# Galaxy Gold & Copper Property



## LEGEND

- Discovery-Corp property
- Abacus property
- New Gold property
- Other properties

- Open pit
- x Deposit or prospect
- Favourable structural corridor

5811000N  
5609000N

# Galaxy Gold & Copper Property

The 3.2 million tonnes resource estimates were done in the 90s

With cash on hand Discovery-Corp is using the historical data to develop a 3D model of the deposit to provide additional drill targets to expand the resource

# Discovery-Corp Enterprises Inc.

- No Debt
- Sufficient working capital
- No outstanding work commitments
- 3D Galaxy Model near completion
- Both adjoining properties planning production



# Discovery-Corp Enterprises Inc.

## Senior Management:

Alex Pannu, LL.B

- President and CEO

Iain Brown, B. Comm., M.Sc.

- Chief Financial Officer

Greg Hawkins, P. Geo, M.Sc.

- Geologist



# Discovery-Corp Enterprises Inc.

## AUDITOR:

- Smythe Ratcliffe
- PKF International

## TRANSFER AGENT:

- CIBC Mellon Trust

## LEGAL COUNSEL:

- Richards Buell Sutton

## BANKER:

- Bank of Montreal,  
Main Branch

# Discovery-Corp Enterprises Inc.

- TSX Venture Exchange
- Trading Symbol DCY.V

**Total Shares Outstanding: 37 million**

**Fully Diluted: 39 million**



# Discovery-Corp Enterprises Inc.

For further information

[investors@discovery-corp.com](mailto:investors@discovery-corp.com)

Iain Brown  
(778) 371 – 9936

**THANK YOU FOR YOUR TIME**

