

# Letter to Shareholders



**704** - 1050 Burrard Street, The Wall Centre  
Vancouver, BC, Canada

☎ (778) 371 9936, 📠 (778) 329 3520

**Email:** [investors@discovery-corp.com](mailto:investors@discovery-corp.com)

**Web:** [www.discovery-corp.com](http://www.discovery-corp.com)

**Exchange:** TSX-V

**Symbol:** DCY

*This brochure is for information purposes only.*

---

## Fiscal 2007 Year in Review Milestones

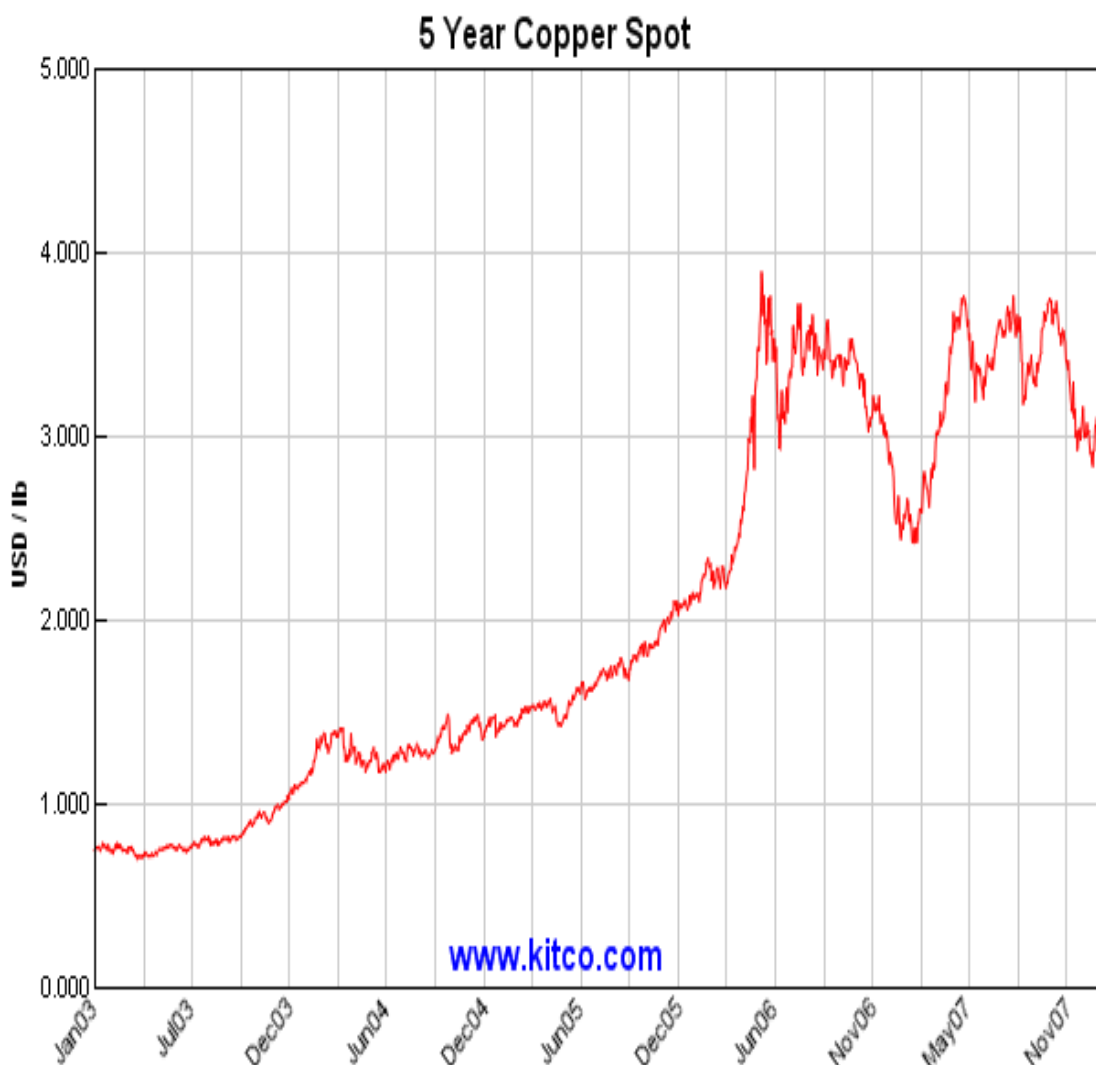
- ✓ Permit approval has been granted for a 26 hole, 2700 metre diamond drill program. Infill and confirmation drilling planned for the Galaxy zone in 2008 to provide data for a NI 43-101 compliant resource estimate on the Galaxy zone with drilling for potential mineralization at depth to expand the resource.
- ✓ Most recent historical estimate was 1.7 million tonnes grading 0.39% copper and 0.13 grams of gold per tonne with a high-grade of 862,000 tonnes grading 0.65 copper and .22 grams of gold per tonne was estimated for the Galaxy zone. A qualified person has not done sufficient work to classify the historical estimate as current mineral resources or mineral reserves. The Company is not treating the historical estimate as current mineral resources or mineral reserves and therefore, the historical estimate should not be relied upon. This is why the company is planning the 2008 program to provide data for a NI 43-101 compliant resource estimate.
- ✓ Successfully completed 2006 drill program on Galaxy on budget.
- ✓ Discovery's 2006 work program located mineralization, both to the north west and south east from the known mineralization in the Galaxy zone.
- ✓ With property open with previously untested areas the company will look to expand this historical resource with drilling to test the geochemical and geophysical anomalies defined by the 2007 work program.
- ✓ Completed 2007 work program on Galaxy on time and on budget.
- ✓ Obtained Galaxy digital database, compiled in 1996 by Teck, the former operator. Data base includes most of the historic 130 drill hole results from the property, thereby saving the company significant drilling costs.
- ✓ Survey work confirms Bill Nye claim is part of Galaxy Property.
- ✓ Graduated from NEX Board to TSX Venture Exchange.
- ✓ Raised \$600,000.

---

## Canadian Exploration Company

- ▶ Discovery-Corp is a junior mineral exploration company listed on the TSX Venture Exchange (**symbol: DCY**) focused on developing the Galaxy property located in the Afton area of south-central British Columbia, which has a long history of mining and exploration.
- ▶ Discovery-Corp has focused its exploration activities within the Iron Mask batholith, host to a number of important alkalic copper-gold porphyry-style deposits including the past producing Afton mine.
- ▶ Management and directors bring several years of experience with public companies and in exploration and mining.

## World Copper Prices

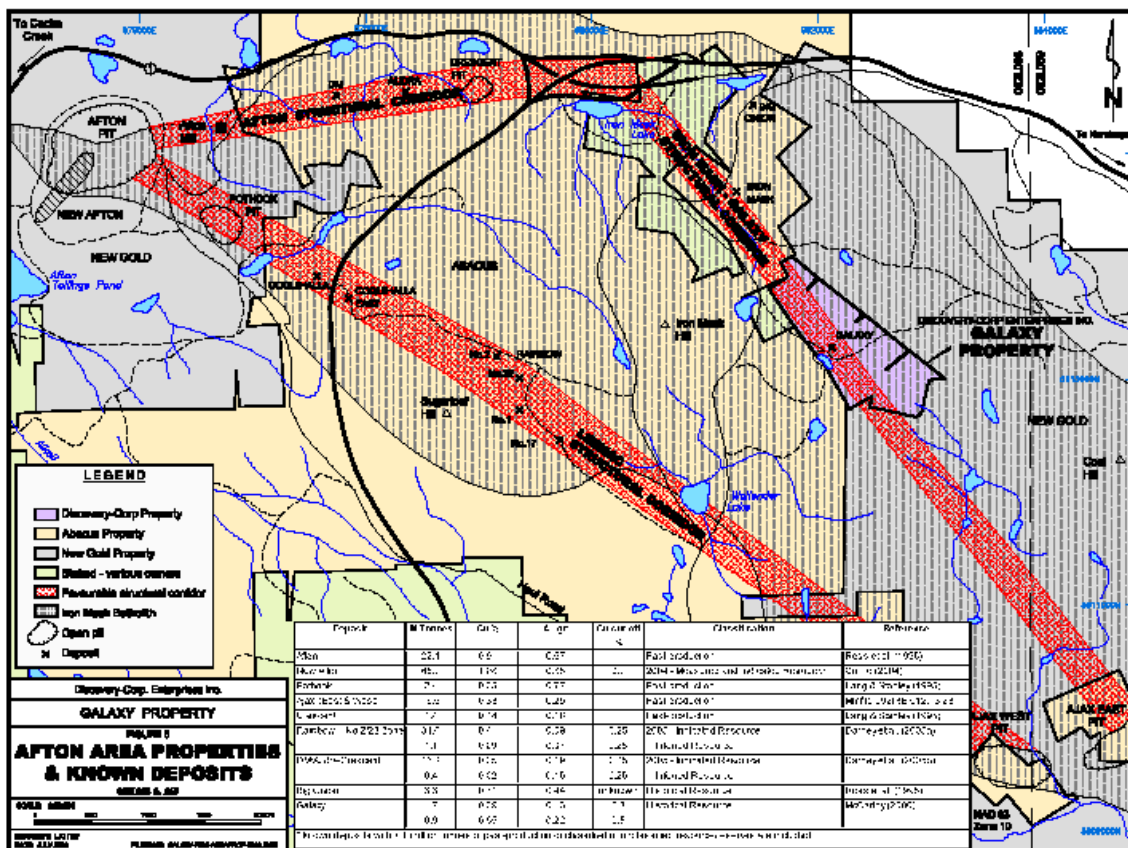


**Copper Prices are up 300% in the Last 5 years**

# Galaxy Copper-Gold Property

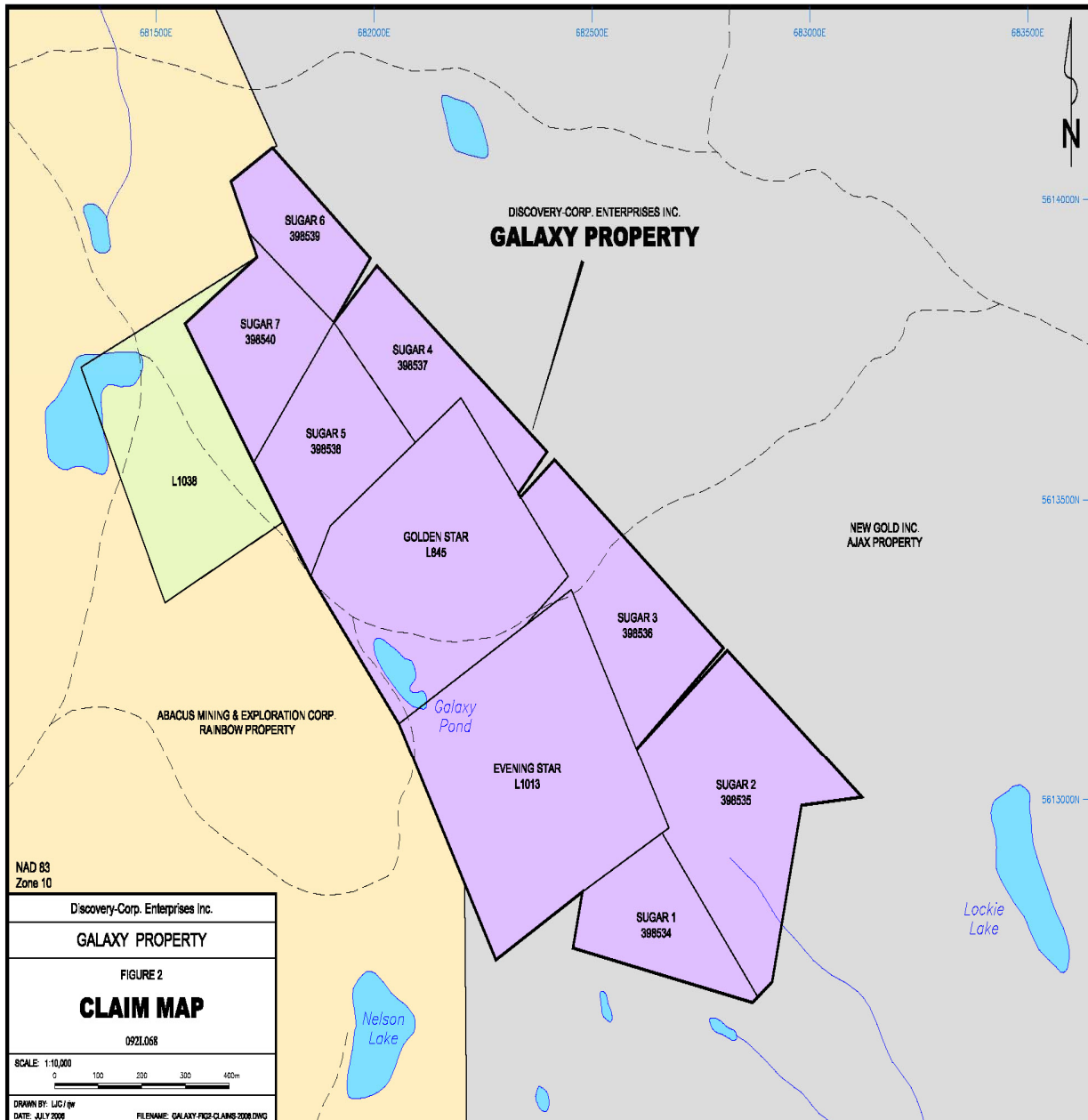
## Project Location

Discovery-Corp Enterprises Inc. is engaged in the exploration for copper and gold in British Columbia. The Company's current focus is on the "Galaxy" property located in Kamloops in south-central British Columbia. The Company's Galaxy property is bordered by Abacus Mining's Rainbow and Comet-Davenport Projects and New Gold's Afton Project.



The Galaxy property is centred 2.5 kilometres south of the Trans Canada Highway and approximately 4.5 kilometres east of the Coquihalla Highway. The property is located seven kilometres southwest of the city centre. Local infrastructure is very good with the two major highways in close proximity and the Canadian Pacific Railway located approximately five kilometres north of the property. The Afton area has a long history of year round mining and all necessary services, including a full-service airport, are available in Kamloops.

The Galaxy property is comprised of nine claims; two Crown granted claims (Golden Star and Evening Star) and seven mineral claims (Sugar 1 through 7), covering approximately 91 hectares, seven kilometres southwest of the city of Kamloops in south-central British Columbia within the Kamloops Mining District. The project is located approximately seven kilometres southeast of the past-producing Afton mine and four kilometres northwest of the former Ajax mine.



All of the claims and the under-surface rights on the Crown grants are 100% owned by Discovery-Corp. The seven mineral claims are in good standing until August 30, 2018. The two Crown granted claims are in good standing until July 2, 2008 and are renewed annually.

---

## Exploration Work

Work on the Galaxy property dates back to the late 1890s with the discovery of mineralization on the Evening Star claim, at what is now known as the Galaxy zone. Considerable exploration and development work was carried out on the property in the early 1900s, particularly on the Evening Star claim including two open cuts, two short shafts, a short tunnel as well as several shallow pits and trenches dug on the Evening Star and Golden Star claims.

In the Summer of 2006, Discovery-Corp carried out sampling and drilling on the Galaxy property. Several hundred metres southeast of the Galaxy zone, a northeast trending zone of copper mineralization appeared to be intermittently exposed over a strike length of approximately 85 metres and is open on strike in both directions. A representative collection of chips from the dump of an old pit testing the mineralized zone returned values of 5,213 parts per million copper and 105 parts per billion gold. Three continuous chip samples across the zone returned an average grade of 2,904 parts per million copper and 127 parts per billion gold over 24 metres.

In the Autumn of 2006, the Company commenced a program on the Galaxy property that was successful at locating mineralization, both to the northwest and the southeast from the known mineralization in the Galaxy zone. Elevated copper values were returned from several samples, with a select grab sample from one old trench assaying 6,574 parts per million copper and 2.22 grams of gold per tonne. Discovery-Corp believes there is potential for additional mineralization on-strike to the southeast and northwest of the Galaxy zone.

The 2007 program continued to November and included soil sampling and ground geophysics on the Galaxy property. The 2007 work program was designed to assess the potential for mineralization on the property, beyond the limits of the known Galaxy zone. Two areas with geochemical and geophysical signatures of similar character to that at the Galaxy zone were identified. Both of these areas are untested by previous drilling.

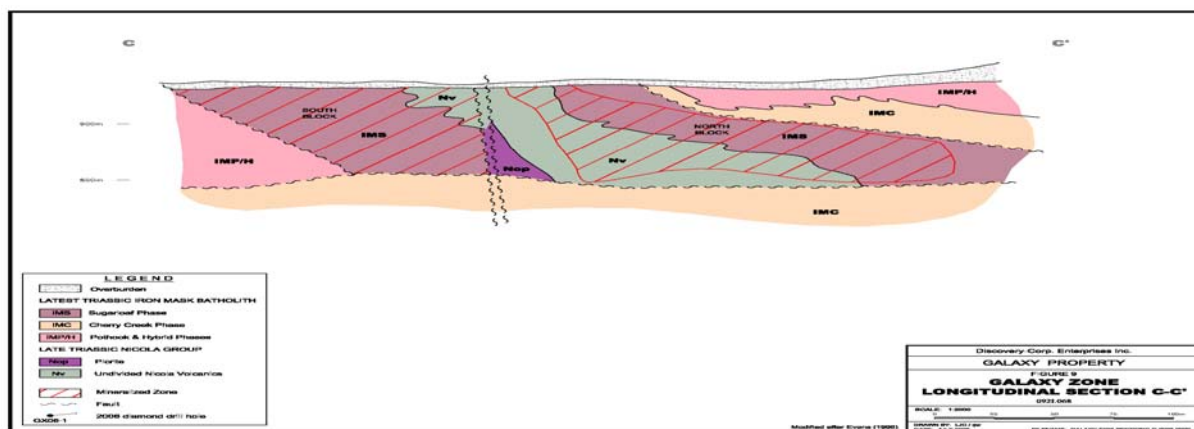
In 2007 the Company completed phase I of a program to establish a NI 43-101 compliant resource estimate. 2007 survey work has discovered the position of the former Bill Nye claim, which supports the concept of a possible continuation to the Galaxy zone mineralization to the northwest on the property. Several old pits with copper mineralization were discovered in this area, during the 2006 work program. Discovery's 2006 work program located mineralization, both to the north west and south east from the known mineralization in the Galaxy zone.

Previous drilling on the Galaxy property has outlined a fault-bounded zone of copper-gold porphyry style mineralization known as the Galaxy zone. Gold values of 3.53 grams of gold per tonne and 7.56% copper over 6.09 metres were reported in 1990 drilling with more typical values of 0.1 to 0.9 grams of gold per tonne with 0.3% to 3.0% copper. Several historical resource estimates have been prepared for the Galaxy zone, although none conform to NI 43-101 standards. Teck produced an estimate in 1996 of 1.7 million tonnes grading 0.39% copper and 0.13 grams of gold per tonne with a higher-grade resource of 862,000 tonnes grading 0.65% copper and 0.22 grams of gold per tonne. A qualified person has not done sufficient work to classify the historical estimate as current mineral resources or mineral reserves. The Company is not treating the historical estimate as current mineral resources or mineral reserves and therefore, the historical estimate should not be relied upon. This is why the company is planning the 2008 program to provide data for a NI 43-101 compliant resource estimate.

## 2008 work program

Discovery-Corp believes there is potential for additional mineralization on-strike to the southeast and northwest of the Galaxy zone, in discrete fault bounded blocks where little exploration has taken place as well as the potential to discover the offset root of the Galaxy deposit in the footwall of the thrust fault that truncates the mineralization at depth. The Company believes the resource potential of the Galaxy property is significant and intends to conduct further exploration to establish a NI 43-101 compliant resource estimate.

### Galaxy Zone – South and North Block



Permit approval has been granted for a 26 hole, 2700 metre diamond drill program. The planned 2008 drill program includes infill and confirmation drilling at the Galaxy zone to provide data for a NI 43-101 compliant resource estimate and drilling for potential mineralization at depth to expand the resource.



**Symbol: DCY**  
Exchange: TSX-V

Current Price  
\$.06

52 week Hi-Low  
\$0.37-\$0.06

Total Shares Outstanding  
27,062,962

Fully Diluted  
31,837,962

Market Capitalization  
\$2 Million

## For Investor Relations

[investors@Discovery-Corp.com](mailto:investors@Discovery-Corp.com)

John Braden  
(604) 771-3075

Discovery-Corp Enterprises Inc.

The Wall Centre  
1050 Burrard Street  
Vancouver, BC Canada  
V6Z 2S3

Tel: (778) 371-9936  
Fax: (778) 329-3520

Website:  
[www.Discovery-Corp.com](http://www.Discovery-Corp.com)

**AUDITOR:**

Smythe Ratcliffe  
(PKF International)

**LEGAL COUNSEL:**

Richards Buell Sutton

**TRANSFER AGENT:**

CIBC Mellon Trust

**BANKER:**

Bank of Montreal, Main Branch

The material contained in this publication is for information purposes only and does not constitute an offer to sell or buy any security. The information is from sources we believe to be reliable, but we do not guarantee it; errors and omissions are inevitable. It is not all inclusive. Do not rely on it as the sole source of information for making decisions.