

DATA COMPILATION AND MODELLING
of the
GALAXY DEPOSIT
Kamloops Mining District
British Columbia, Canada
for
Discovery-Corp Enterprises Inc.
by
CME Consultants Inc.

Christopher O. Naas. *P. Geo.*
December 18, 2009

Latitude: 50°38'39"N
Longitude: 120°25'23"W
NTS 92I/9

SUMMARY

The Galaxy property is located near Kamloops, British Columbia, 7 kilometres southeast of the past-producing Afton Mine and 4 kilometres northwest of the former Ajax Mine. There is good access to the property and good local infrastructure. It is a relatively small property, comprised of two crown granted mineral claims and seven 2-post mineral claims that cover an area of approximately 90 hectares. The claims are 100% owned by Discovery-Corp Enterprises Inc. Discovery's claims are entirely surrounded by mineral claims held by others (primarily Abacus Mining and Exploration Inc. and NewGold Inc.) that are being actively explored.

The property is well situated within the Iron Mask batholith, occurring along the favourable Iron Mask-Galaxy structural corridor, and hosts a fault-bounded zone of near-surface copper-gold alkalic porphyry-style mineralization, known as the Galaxy zone. Considerable drilling has been done at the Galaxy zone since the early 1960's and several historical resource estimates have been prepared based on this drilling. None of these resource estimates conform with CIM Best Practices Guidelines or with categories set out in Sections 1.2 and 1.3 of NI 43-101.

During the verification and validation process, errors were noted in the database when compared to the sourced original documents. Since all original documents were not located, the database has not been verified and validated in full.

While some limits of mineralization at the Galaxy zone are well established by drilling, there is potential for additional mineralization on-strike to the southeast and northwest. There is also potential to discover the offset root of the Galaxy deposit, in the footwall of the thrust fault that truncates the mineralization at depth.

A 2,000 metre diamond drill program is recommended at an estimated cost of \$400,000 to test strike and depth potential in addition to verifying and infilling historical zones. This will potentially increase the size of the current deposit and will assist in moving the deposit toward a NI 43-101 compliant resource.

TABLE OF CONTENTS

	<i>page</i>
SUMMARY	ii
1.0 INTRODUCTION AND TERMS OF REFERENCE	1
2.0 RELIANCE ON OTHER EXPERTS	1
3.0 PROPERTY DESCRIPTION AND LOCATION.....	1
3.1 TITLE.....	3
4.0 ACCESSIBILITY, CLIMATE, LOCAL RESOURCES, INFRASTRUCTURE AND PHYSIOGRAPHY	3
4.1 ACCESSIBILITY	3
4.2 CLIMATE	5
4.3 LOCAL RESOURCES.....	5
4.4 INFRASTRUCTURE.....	5
4.5 PHYSIOGRAPHY	5
5.0 HISTORY	6
5.1 REGIONAL EXPLORATION HISTORY.....	6
5.2 PROPERTY EXPLORATION HISTORY.....	8
6.0 GEOLOGICAL SETTING	12
6.1 REGIONAL GEOLOGY	12
6.2 PROPERTY GEOLOGY	16
7.0 MINERALIZATION	18
8.0 DATA COMPILATION.....	19
8.1 VERIFICATION AND VALIDATION.....	20
9.0 DEPOSIT MODELLING	26
9.1 METHODOLOGY.....	26
9.1.1 Mineralization.....	27
9.1.2 Structural Features	27
9.1.3 Topography	27
9.2 RESULTS.....	27
10.0 DISCUSSION.....	28
11.0 CONCLUSIONS	28
12.0 RECOMMENDATIONS	32
13.0 REFERENCES	37
14.0 CERTIFICATE.....	39

LIST OF TABLES

	<i>page</i>
Table 1: Claim Information	3
Table 2: Afton Area Deposits: Past-Production.....	6
Table 3: Comet-Davenport, Rainbow and Ajax Property Resources.....	7
Table 4: Galaxy Zone Historical Resources	11
Table 5: Comparison of Surveyed versus Calculated Coordinates	22
Table 6: Summary of drilling, Galaxy Deposit (modified after Caron, 2006)	24

LIST OF FIGURES

	<i>page</i>
1. Location Map (1:8,500,000).....	2
2. Claim Map, <i>Galaxy Property</i> (1:20,000)	4
3. Regional Geology (1:250,000)	13
4. Economic Setting (1:50,000).....	14
5. Geology Plan Map, <i>Galaxy Property</i> (1:5,000)	17
6. DDH Plan Map, <i>Galaxy Property</i> (1:5,000)	23
7. Schematic 3D View, Looking Southeast	29
8. Schematic 3D View, Looking Northwest	30
9. Drill Hole Cross Section, Section, A-A' (1:1,500).....	31
10. Exploration Potential, Plan View, <i>Galaxy Property</i> (1:6,000).....	33
11. Exploration Potential, Cross Section, Section, B-B' (1:1,500).....	34

LIST OF APPENDICES

- I. Abbreviations and Conversion Factors

1.0 INTRODUCTION AND TERMS OF REFERENCE

This report has been prepared at the request of Discovery-Corp Enterprises Inc. (“Discovery-Corp”) on the Galaxy Deposit located in the Kamloops Mining Division of British Columbia, Canada.

The objective of this study was to create a 3-dimensional model of mineralization of the Galaxy deposit from a compiled geo-database. Field mapping, relogging or reinterpretation of the geological model were not undertaken. Resource estimates are beyond the scope of this report.

Work history and geological setting have been included in this report for completeness. Recommendations for future work are also included.

A list of definitions, abbreviations and conversion factors are presented in Appendix I.

2.0 RELIANCE ON OTHER EXPERTS

In the disclosure of information relating to legal, title and related issues, the author has relied on information provided by the British Columbia Mineral Titles Online and by Discovery-Corp. The disclosure represents no legal opinion of the author.

In the disclosure of information relating to socio-political, environmental and related issues, the authors have relied on information provided by Discovery-Corp and information obtained from public sources.

3.0 PROPERTY DESCRIPTION AND LOCATION

The 90.1 hectare Galaxy Property (the “Property”) is located in the Kamloops Mining Division in south-central British Columbia, Canada, within the city limits of Kamloops, approximately 7 kilometres southwest of the city centre (Figure 1).

The Property is centered at approximately 50° 38’ 39” N Latitude and 120° 25’ 23’ W Longitude within map sheet 92I/9. It is hosted within the prospective Iron Mask batholith, approximately 7 kilometres southeast of the past-producing Afton Mine and 4 kilometres northwest of the past-producing Ajax Mine. Both of these deposits are hosted in the Iron Mask batholith.



LEGEND

- Highway
- Secondary route
- River
- Waterbody



DISCOVERY- CORP ENTERPRISES INC.

LOCATION MAP

Galaxy Project
Kamloops M.D, British Columbia, Canada

Project:	P66	By:	TV
Scale:	1:8,500,000	Drawn:	TV
Figure:	1	Date:	December 2009



3.1 TITLE

In total, Discovery-Corp holds 7 cell claims totaling 51.95 hectares and 2 crown grants totaling 38.15 hectares (Figure 2).

Discovery-Corp wholly owns the mineral tenures on all of the cell claims and the under-surface rights on the crown grants.

The property is situated entirely on land with privately held surface rights. The surface titles to the Evening Star and Golden Star crown grants are held by Waterford Holdings Ltd. of Kamloops, B.C., and the surface titles to the cell claims are held by Sugarloaf Ranches Ltd., a company owned by Teck-Cominco Ltd. of Vancouver, BC.

Table 1: Claim Information

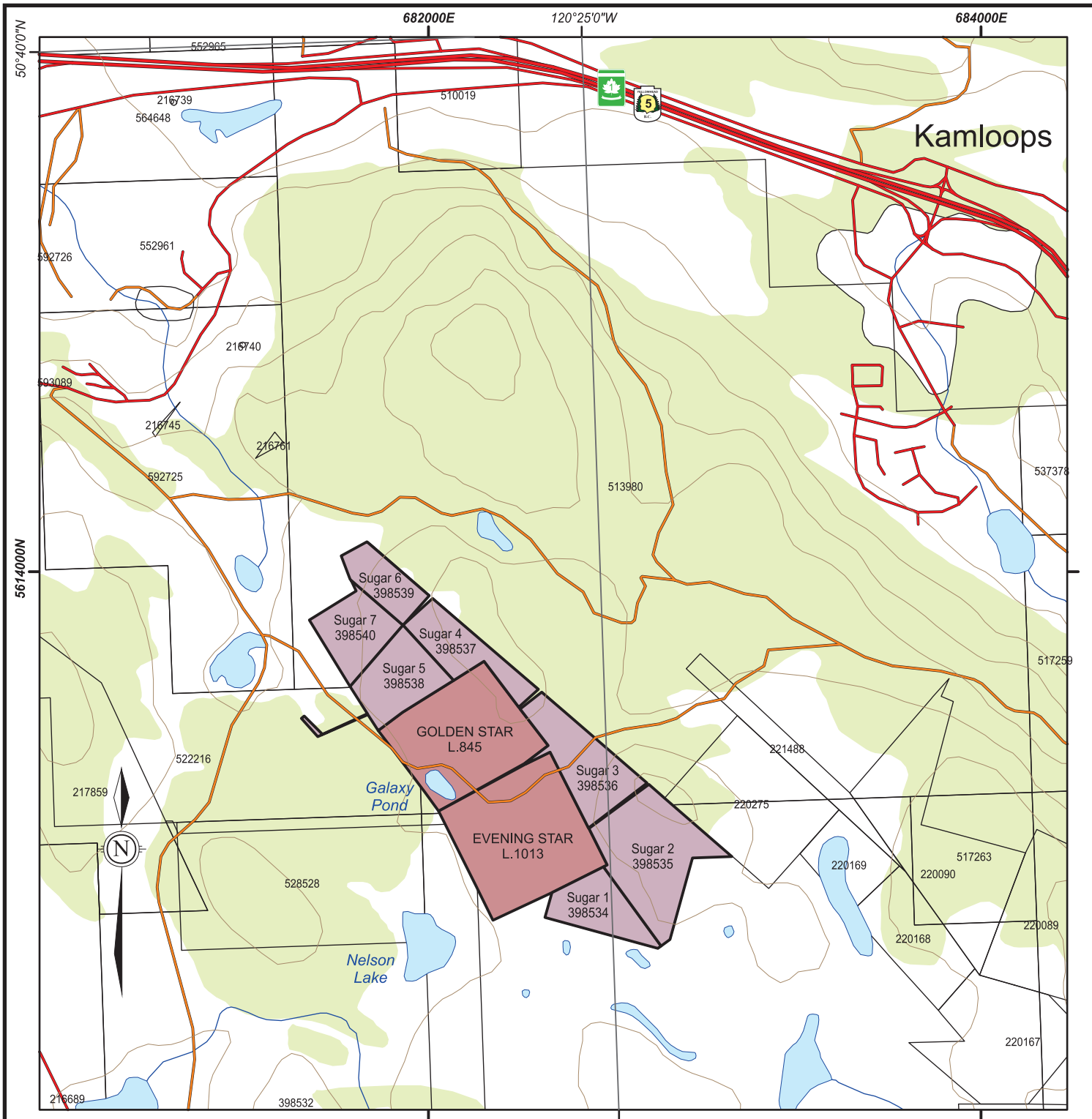
Tenure Number	Claim Name	Area (ha)	Owner (100%)	Good To Date	Claim Type
398534	Sugar 1	5.92	Discovery-Corp	2018/aug/30	Legacy
398535	Sugar 2	13.59	Discovery-Corp	2018/aug/30	Legacy
398536	Sugar 3	8.68	Discovery-Corp	2018/aug/30	Legacy
398537	Sugar 4	6.11	Discovery-Corp	2018/aug/30	Legacy
398538	Sugar 5	7.13	Discovery-Corp	2018/aug/30	Legacy
398539	Sugar 6	4.41	Discovery-Corp	2018/aug/30	Legacy
398540	Sugar 7	6.11	Discovery-Corp	2018/aug/30	Legacy
DL. 845	Golden Star	17.50	Discovery-Corp	N/A	Crown Grant
DL. 1013	Evening Star	20.65	Discovery-Corp	N/A	Crown Grant

4.0 ACCESSIBILITY, CLIMATE, LOCAL RESOURCES, INFRASTRUCTURE AND PHYSIOGRAPHY

4.1 ACCESSIBILITY

The Property is located on NTS map sheet 92I/9 and geographically centered at 50° 38' 39" N and 120° 25' 23" W. The claims are located approximately 7 kilometres southwest of the city of Kamloops, centred 2.5 kilometres south of the Trans Canada Highway (Highway 1), and approximately 4.5 kilometres east of the Coquihalla Highway (Highway 5).

From Kamloops, the Lac Le Jeune road is followed south for approximately 5.5 kilometres from its intersection with Copperhead Drive. Just south of Wallender Lake, a dirt road heads northwest from the Lac Le Jeune road, across fenced Sugarloaf Ranch range land (through a locked gate). This road is followed for approximately 2.5 kilometres to the Galaxy property.

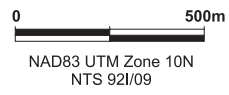


Mineral tenures from BC MTO
Crown Grant boundaries modified from Caron (2006)

LEGEND

- Mineral Tenures (as of July 17, 2009)**
- Discovery-Corp. Legacy claims
 - Discovery-Corp. Crown Grants
 - Other tenure boundaries

- Topography**
- Highway road
 - Paved road
 - Paved road
 - Watercourse
 - Contours (40 metre interval)
 - Waterbody
 - Forested area



DISCOVERY-CORP ENTERPRISES INC.

CLAIM MAP

Galaxy Project
Kamloops M.D., British Columbia, Canada

Project No:	P66	By:	TV
Scale:	1:20,000	Drawn:	TV
Figure:	2	Date:	December 2009



4.2 CLIMATE

The climate is semi-arid, with little rainfall and temperatures typically exceeding 30° C during summer months. Winters are relatively mild with little snowfall and average temperatures just below freezing. During the winter months, short “cold-snaps” where temperatures drop to -20° C are common.

4.3 LOCAL RESOURCES

The property is located within the Kamloops city limits, approximately 7 kilometres southwest of the city center, providing excellent access to an experienced and skilled labour force as well as the necessary services and suppliers required to support future exploration programs.

4.4 INFRASTRUCTURE

Local infrastructure is very good, with two major highways in close proximity to the property and the Canadian Pacific Railway located approximately 5 kilometres north of the claims. The Afton area has a long history of mining and exploration. All necessary services, including a full-service airport, are available in Kamloops.

The only infrastructure on the Property, consists of a network of gravel and dirt roads and trails.

4.5 PHYSIOGRAPHY

The property covers gently rolling hills, typical of the area, with little elevation change across the claims. The elevation at the Property ranges from 915 to 975 metres.

A thick layer of glacial till covers the property and rock exposure is limited, with less than 5% outcrop on average. Drilling on the Galaxy zone has confirmed that till thickness averages 3-5 metres and commonly exceeds 10 metres.

Vegetation consists of an open forest of mixed Douglas fir and ponderosa pine with grassy undergrowth, and open areas with sagebrush and bunchgrass.

A small ephemeral pond is located immediately west of the Galaxy Zone. Seasonally and by permit only, limited water is available for drilling from this pond. Hauling or pumping in water would be necessary if significant water volumes were required for exploration or mining purposes.

5.0 HISTORY

The following regional and property exploration histories have been drawn from the NI43-101 Technical Report authored by L. Caron, *P.Eng.* (2006).

5.1 REGIONAL EXPLORATION HISTORY

The Iron Mask-Afton area has a long history of exploration and mining, with work dating back to the late 1800's. Although early workers recognized the widespread low-grade copper mineralization in the region, they had no way of profitably mining it and as such, early work in the area focused largely on higher-grade veins and zones.

There was limited early production from a few of the showings, the principal producer being the Iron Mask Mine situated along the favorable Iron Mask-Galaxy structural trend, less than 1 kilometer northwest of the Galaxy property. The Iron Mask Mine operated from 1903 to 1928, during which time a total of approximately 165,000 tonnes of ore was produced grading 1.5 % Cu, 0.7 g/t Au and 2.8 g/t Ag (BC Minfile 092INE010).

With the introduction of open pit mining techniques in the 1950's came a revival in interest for the Iron Mask-Afton area and this started a period of exploration that has continued to the present. Percussion drilling by Chester Miller for Afton Mines Ltd. resulted in the discovery of the Afton ore body in 1971. The deposit was placed into production in late 1977 and continued to operate until 1987. Three other deposits (Ajax, Pothook and Crescent) were subsequently mined, with the ore trucked to the Afton mill for processing. Past-production from these deposits is recorded as follows in Table 2:

Table 2: Afton Area Deposits: Past-Production

Deposit	Mt	Cu %	Au g/t	Year(s)	Reference
Afton	22.1	0.91	0.67	1977-1987	Ross <i>et al</i> (1995)
Pothook	2.4	0.35	0.77	1988	Lang & Stanley (1995)
Ajax (East & West)	16.6	0.33	0.25	1989-91; 1994-97	Minfile 092INE 012,13,23
Crescent	1.4	0.44	0.18	1988-89	Lang & Stanley (1995)

During the period when these deposits were in operation, Teck Exploration, Afton Mining, and several other companies carried out extensive exploration in the area. Exploration was primarily aimed at finding more ore for the mill at the Afton mine. In 1980, a deep diamond drilling program was carried out in the Afton pit to test for mineralization at depth. High-grade copper (+ gold) mineralization was encountered, but a 1981 feasibility study showed that underground mining of this zone was not economic. A substantial amount of drilling was also done during the 1980's and 1990's on the Rainbow and Comet-Davenport properties.

The Mine Leases at Afton were allowed to expire in 1999. The area covering both the Afton pit and the known zone of higher-grade mineralization at depth beneath the pit, was quickly staked. A large land package surrounding the Afton, Ajax and Pothook deposits was also staked, and late in 1999, DRC Resources (now New Gold Inc.) acquired these claims. DRC

began a diamond drill program to explore for the known zone of high-grade Cu-Au mineralization at depth beneath and south of the Afton pit. In 2006, a measured + indicated resource of 65.7 million tonnes grading 1.2% Cu, 0.77 g/t Au and 2.59 g/t Ag was announced for the new Afton Deposit (www.newgoldinc.com).

A production decline, almost 2 kilometres in length was driven to allow access for underground definition drilling of the New Afton deposit as part of the final feasibility study. The decline collars at depth within the original Afton pit and is ultimately part of the mining plan for the deposit. The feasibility study was completed early in 2007, and mine permit approval was received in November 2007.

New Gold also holds a large land package (the Ajax-Python project), located to the east of their Afton project, surrounding and north of the Ajax crown grants. In addition to work on the New Afton deposit, New Gold is actively exploring other targets on both their Afton and Ajax-Python properties.

In 2002, Abacus Mining and Exploration Corp. entered into an option with TeckCominco, to acquire all of TeckCominco's interest in claims and crown grants in the Afton-Ajax area (the Rainbow, Comet-Davenport and Ajax properties). Abacus has now acquired a 100% interest in all of the properties, and in addition has entered into an agreement with TeckCominco to purchase the Afton mill facilities and equipment. Since 2002, Abacus has been aggressively exploring their properties and resources for the Comet-Davenport, Rainbow, and Ajax properties (Darney *et al*, 2005a,b) are listed in Table 3 below. The DM-Audra-Crescent zone is a relatively near surface zone that could potentially be mined by open pit methods while the Rainbow No. 2/22 Zone is a deeper zone that would require underground bulk-mining.

Table 3: Comet-Davenport, Rainbow and Ajax Property Resources

Zones and Resources	M Tonnes	Cu (%)*	Au (g/t)
Rainbow No. 2/22:			
Indicated	31.6	0.41	0.09
Inferred	1.1	0.29	0.07
Comet-Davenport DM/Audra/Crescent:			
Indicated	16.2	0.35	0.19
Inferred	9.4	0.32	0.15
Ajax West:			
Inferred	114.7	0.40	0.25

* cut-off grade = 0.25% Cu.

Abacus has continued to explore their properties and has announced significant results from ongoing deep drilling at the Ajax West pit, including one hole which returned 0.5% Cu and 0.31 g/t Au over 432 metres. Drill results have confirmed the continuity of mineralization beneath the Ajax West pit, to a depth of at least 300 metres and for a strike length of over 300 metres (Abacus News Release, May 4, 2006). Current resource estimates (June 18, 2009) of the Ajax Deposit stand at 422.4 Mt at 0.32% copper equivalent (Wardrop, 2009).

In addition to the extensive mineral exploration conducted by industry, there has been considerable work in the Iron Mask areas by both government and academic-based geologists.

This work provides valuable information for exploration purposes. In the early 1990's, the Mineral Deposit Research Unit at the University of British Columbia undertook a project to study the geology and mineralization of the Iron Mask batholith and in 1993, the Geological Survey of Canada flew an airborne geophysical survey over the Iron Mask batholith.

The results of the airborne survey, which were published at a 1:50,000 scale as GSC Open File 2817 (Shives and Carson, 1995). This data has subsequently been re-released by the BC Geological Survey Branch as a series of 1:25,000 scale maps (Logan *et al*, 2006b).

In 2002, the BC Geological Survey Branch, in partnership with Abacus Mining and Exploration, initiated the "Iron Mask Project" (Logan, 2003). The project was designed to provide an up-to-date regional geology map of the Iron Mask batholith, through a compilation of previous work and through new geological mapping, with a focus on mineralization and mineral potential. The government airborne geophysical survey data (magnetic and radiometric) was incorporated with the geological and mineral occurrence information to aid in assessing the potential of overburden covered areas. The results of the Iron Mask Project are presented by Logan and Mihalyuk (2006) and by Logan *et al* (2006a,b).

5.2 PROPERTY EXPLORATION HISTORY

Work on the Galaxy property dates back to the late 1890's, with the discovery of mineralization on the Evening Star claim, at what is now known as the Galaxy zone. The boundaries of the Galaxy property boundary have fluctuated over the years as a result of the differing ownership and periodic re-staking. The following discussion of the history of exploration is taken from Caron, 2007 and is restricted to work done on ground currently part of the Galaxy property. Where no reference is noted in the following discussion, information has been taken from the Minister of Mines Annual reports and from the BC Minfile 092INE007.

1899: The first mention of work on the Galaxy property was in 1899, on the Evening Star claim. This work included two open cuts and well as two short shafts and a short tunnel.

1900: The Golden Star (L. 845) crown grant was issued to the Kamloops Copper Mg. Co. Ltd.

1901-06: Considerable exploration and development work was done during this period, particularly on the Evening Star claim. By 1906, an adit had been run from the edge of Galaxy pond for a distance of 45 metres (150 feet). A 2-compartment shaft was sunk to further explore mineralization encountered in the adit. The shaft was vertical to a depth of 17 metres (55 feet), and then inclined "on the dip of the vein" to a depth of 27 metres (90 feet).

On the Golden Star, a short adit and a winze were driven to intersect the same zone of mineralization tested by the Evening Star workings. Several shallow pits and trenches were also dug on the two crown grants during this period.

1912: a crown grant was issued for the Evening Star (L. 1013), to Messrs. Morrison, McArthur and Harper.

1913: ownership of the Golden Star had transferred to Messers. McArthur and Harper, two of the owners of the adjoining Evening Star crown grant.

1916: the Granby Company held an option on the Evening Star Group, and “a considerable amount of prospecting was done by diamond drilling”.

1916-17: 48 tonnes (53 tons) were shipped from the Evening Star mine by the owners, returning an average grade of 5.3% Cu and 18.8 g/t Ag (0.55 oz/t Ag). No further work is documented on the property until 1956 when it was acquired by Galaxy Minerals Ltd..

1956-64: in 1956, Galaxy Minerals rehabilitated the Evening Star shaft and carried out a program of underground sampling, trenching, roadwork and limited diamond drilling at the Galaxy zone. From 1961 to 1964, additional work was done at the Galaxy Zone, including an induced polarization survey and considerable trenching and diamond drilling (38 holes totaling 5,225 metres). In 1964, the company changed its name to Galaxy Copper Ltd.

1965-66: Vanco Explorations optioned the Galaxy property in 1965, as part of a much larger land holding in the area. Geophysical and geochemical surveys were done by Sulmac Exploration Services, and considerable diamond drilling was completed at the Galaxy Zone (24 holes totalling 2,418 metres) (Preto, 1967).

1968-71: Galaxy Copper Ltd. amalgamated with Bata Resources and Stampede Oils Ltd., to form United Bata Resources Ltd. In January 1969, United Bata optioned a 50% interest in the property to Kimberly Copper Mines Ltd (“Kimberly”). During 1969, Kimberly rehabilitated the Evening Star shaft and completed a total of 122 metres (400 feet) of underground drifting from the shaft, at the 80 foot level. Sixteen surface diamond drill holes, totaling 1,562 metres, were drilled at the Galaxy Zone and a historical non-compliant NI 43-101 resource of “3,628,400 tons (~ 3,298,500 tonnes) proven and 1,814,200 tons (~ 1,649,000 tonnes) indicated of mineralization which has an average assay value of 0.58% Cu” was estimated (United Bata Resources Limited report dated May 15, 1969, referenced in Minfile 092INE007) (Table 4).

1971: Kimberly Copper changed its name to Nor-West Kim Resources Ltd (“Nor-West”). Nor-West surveyed and mapped the underground workings on the Evening Star, and extended the northwest drift from shaft (at the 80 foot level), to a point some 365 metres northwest of the shaft. At this point, a 30 metre (100 foot) ventilation raise was put to surface. Two bulk samples were collected from underground and metallurgical testing was reportedly done by Bethlehem Copper (Belik, 1990). The 1971 Minister of Mines Annual reports that an additional 1,333 metres of surface drilling and 327 metres of underground diamond drilling was also completed on the Evening Star crown grant.

1973: Teck Corporation Ltd. completed an IP survey on the Makaoo property, a property that included all of the current Galaxy property. A “possible” northwest trending chargeability anomaly was defined east of the Galaxy zone, on the current Sugar 2 and 4 mineral claims, which remains untested (Hallop and Goudie, 1973).

1976-77: Canadian Superior Exploration optioned the Galaxy property and carried out geological mapping, topographic and ground magnetometer surveys and drilled 8 percussion holes (totalling 731 metres). The 1977 drilling was directed at magnetic lows to the southeast and northwest of the Galaxy zone (Blanchflower, 1978).

1985-87: Abermin Corporation acquired the Galaxy property in 1985. Abermin reported a non-compliant NI 43-101 resource of 2,267,750 tonnes grading 0.6% Cu and 0.51 g/t Au for the Galaxy zone (Table 4).

1987: Abermin drilled 7 percussion drill holes, totalling 367 metres. Four of the 1987 drill holes were situated on the current Galaxy property, and tested the Galaxy zone (McArthur and Girling, 1987).

1990: Getchell Resource Corp. acquired the Galaxy property from Abermin, subject to a 3% NSR, payable to Abermin if the property was placed into production by Getchell. If Getchell was reduced to a net profits or net smelter royalty interest through an arms-length transaction, then Abermin would be entitled to the first \$200,000 in NSR payments, plus 40% of Getchell's royalty thereafter (Getchell News Release, Jan. 17, 1990).

Getchell completed a percussion drill program at the Galaxy zone, to verify earlier drill results and to evaluate the gold potential of the zone. Seven holes, totalling 649 metres, were drilled and a historical non-compliant NI 43-101 resource of 3.2 million tonnes grading 0.65% Cu and 0.34 g/t Au was estimated for the Galaxy zone (Belik, 1990; BC Geological Survey Information Circular 1997-1) (Table 4).

Later in 1990, Abermin assigned itself into bankruptcy. Abermin's assets were acquired by CSA Management and Goldcorp Investments Ltd. (and later by Lexam Explorations).

1995-96: In 1995, Getchell entered into a joint-venture with Afton Mining Limited, and in January and February 1996, Teck Explorations Ltd. completed a program of delineation drilling on the Galaxy zone, under contract to Afton Mining. Thirty-three diamond drill holes (totalling 4,087 metres) were drilled within a 400 by 200 metre area, as detailed by Evans (1996). Following the drill program, a non-compliant NI 43-101 resource estimate was prepared which showed a significantly lower tonnage and grade for the Galaxy Zone than earlier estimates (Table 4). McCarthy (2000) quotes the resource estimated by Afton Mining as, "a low-grade open-pit mineable resource (0.3-0.5% Cu) of 1,700,000 tonnes at 0.39% copper and 0.13 g/t gold, with a high-grade (>0.5% Cu) of 862,000 tonnes at 0.65% copper and 0.22 g/t Au". This resource estimate was not made public by Afton Mining and neither the final numbers nor details regarding methodology could be verified.

Afton Mining dropped their option on the property in April, 1996, citing "insufficient tonnage above a 0.5% copper cut-off grade" as the main reason (Getchell News Release, Apr. 18, 1996).

Table 4: Galaxy Zone Historical Resources

Company	Year	Type	Tonnage (metric)	Cu%	Au g/t
United Bata Res Limited	1969	Proven	3,298,500	0.58	
		Indicated	1,649,000	0.58	
Abermin Corporation	1985	Unspecified	2,267,750	0.6	0.51
Getchell Resource Corp.	1990	Unspecified	3,200,000	0.65	0.34
Afton Mining Limited	1996	Low-grade open-pittable	1,700,000	0.39	0.13
		High-grade within above	862,000	0.65	0.22

2000: Getchell Resource Corp. was re-named Discovery-Corp Enterprises Inc. in 2000. Discovery-Corp subsequently entered into an agreement with Snowfield Development Corp. whereby Snowfield could acquire a 49% interest in the Galaxy property. A summary report on the property was prepared by McCarthy (2000), but there is no record that any work was completed on the property. The agreement terminated by default on August 1, 2002, with Discovery-Corp retaining a 100% interest in the property.

2006: Discovery-Corp drilled 3 NQ diamond drill holes (286.2 metres). The drill program was designed to approximately twin three of the 1990 reverse circulation drill holes, as recommended by McCarthy (2000), in order to provide further analytical information, particularly with regards to gold content. Furthermore, 19 rock samples were collected from various areas of the property. The best result from the 2006 drill program was 12.47 metres averaging 0.72% Cu and 0.46 g/t Au (hole GX06-1). The 2006 drilling showed significantly lower copper and gold grades from drill core than earlier reported results from reverse circulation drilling. Caron (2006) reports that differences in collar location between the RC and diamond drill holes, sample intervals, and that the 2006 drill core was not sampled in entirety makes it impossible to make any detailed comparisons between the two sets of drill results. It can be concluded, however, that there was not especially good correlation between the results from the 1990 reverse circulation drill program and the 2006 diamond drill program. Hole GX06-1 (a twin of hole 90-7) returned significantly lower copper and gold values over a similar interval in the RC hole. Hole GX06-2 (a twin of hole 90-3) similarly had considerably lower copper and gold than the same interval in the RC hole. Hole GX06-3 was drilled as an angle hole, rather than a vertical hole as its “twin”, hole 90-1, in order to avoid underground workings. As a result it tested a significantly different section of the Galaxy zone than hole 90-1. The only interval sampled in hole GX06-3 was from the base of the Galaxy zone, near the low-angle fault that truncates the mineralization at depth, and below the section tested by hole 90-1.

2007: a ground magnetic geophysical and soil geochemical survey were completed. A total of 15.93 line-kilometres grid were established over the property (14.56 line-km of cross lines and 1.37 line-km of baseline). Crosslines were set at 50 metre spacing. A total of 602 soil samples were collected over the grid at 25 metres stations along the cross lines. A total of 1,284 magnetic readings were collected over the grid at 12.5 metre stations along both cross and baselines.

6.0 GEOLOGICAL SETTING

The following regional and property geology descriptions have been drawn from the NI43-101 Technical Report by L. Caron, (2006).

6.1 REGIONAL GEOLOGY

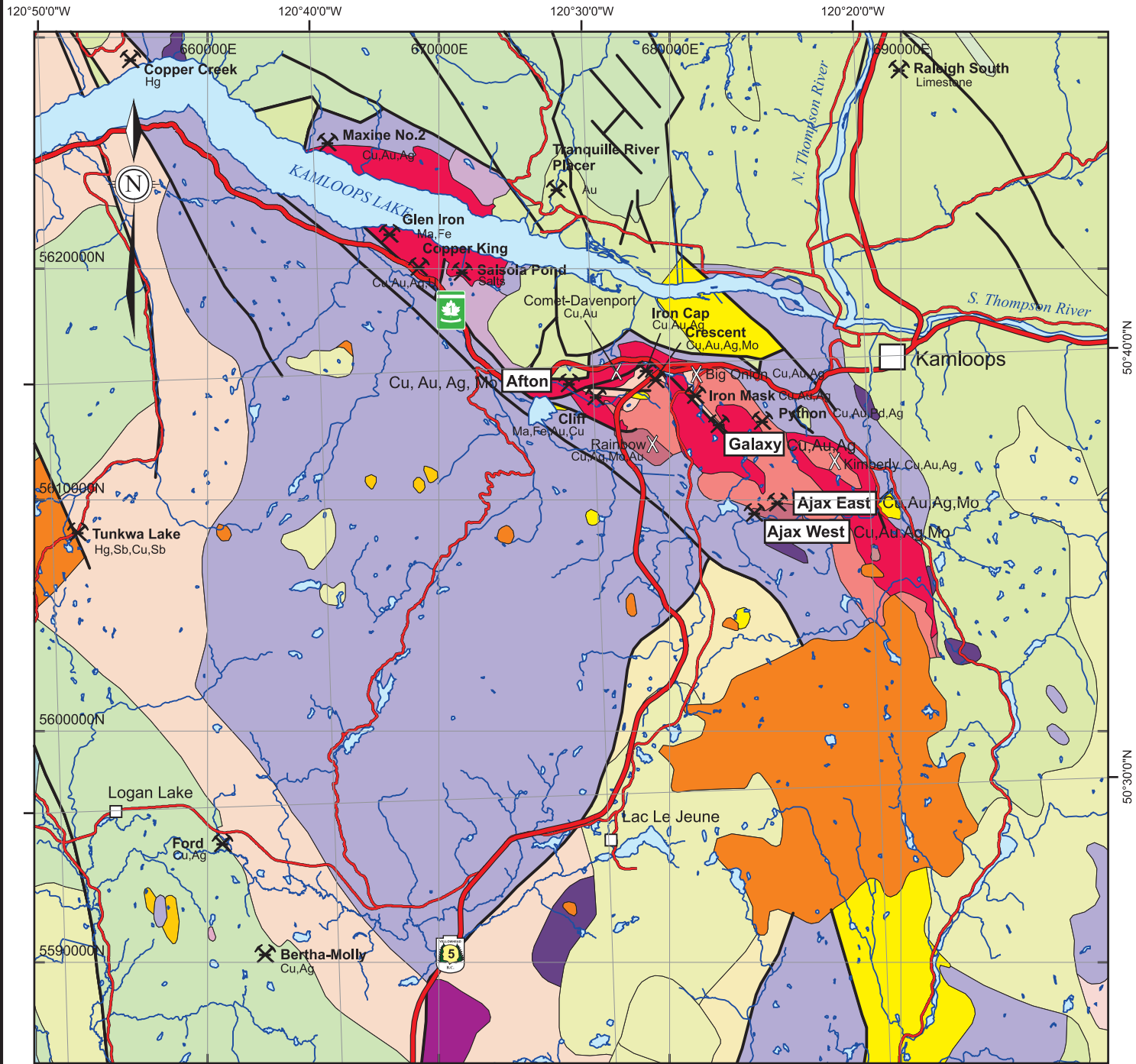
The Galaxy property is situated in the northeastern portion of the Iron Mask batholith, an elongate composite intrusion of Late Triassic age which is the host to a number of important alkalic copper-gold porphyry style deposits. The regional geology of this area is shown as Figure 3. A map of the economic setting of the deposits in this portion of the Iron Mask batholith is presented in Figure 4.

Cockfield (1948) describes the geology and mineral deposits of the Nicola map sheet, while numerous authors, including Kwong (1987), Northcote (1975, 1977), Preto (1967), Snyder and Russell (1995), Ross *et al* (1995) and Stanley *et al* (1994), describe the geology and mineralization in the Iron Mask area. Most recently, Logan and Mihalynuk (2006) have done geological mapping, in conjunction with a compilation of previous mapping, to produce an up-to-date geological map of the Iron Mask batholith. The following discussion is adapted from the above sources, and from excellent summaries of the regional geology by Darney *et al* (2005a,b).

Regionally, the property is situated within the accreted Quesnel Terrane. The oldest rocks in the map area belong to the Devonian to Permian Harper Ranch Group, exposed northeast of Kamloops in the Heffley Creek area, as shown on Figure 3. The Harper Ranch Group consists of two members, a lower volcanic arc succession and an upper carbonate platformal succession, and forms the basement to the Quesnel Terrane in this area.

Overlying the rocks of the Harper Ranch Group is the Late Triassic Nicola Group, a thick subaqueous island arc assemblage that forms a belt some 25 kilometres wide and as much as 7.5 kilometres thick. The Nicola Group consists mainly of fine-grained and porphyritic volcanics, of dominantly andesitic composition (greenstones), and of tuffs and breccias. Minor sediments are associated with the volcanics, including limestone, argillite and conglomerate. In the Iron Mask area, Logan and Mihalynuk (2006) have separated the Nicola Group into eight distinct units. One of these is a serpentinized basalt known locally as picrite, which is intimately associated with many of the known mineral deposits. The picrite has been interpreted to represent wedges of basalt that have been tectonically emplaced along major fault zones.

The Nicola rocks are intruded by the Late Triassic Iron Mask batholith, a composite alkalic intrusive that hosts a number of important copper-gold porphyry-style deposits. Figure 5 shows the locations of the larger deposits in the northern part of the batholith, in the vicinity of the Galaxy property. While most of the mineralization is hosted within the batholith, near the contact with the batholith the Nicola rocks may be foliated and may also contain copper mineralization. Styles of mineralization are discussed in section 8.0.



LEGEND

Quaternary

Basaltic volcanics

Tertiary

Unnamed Neogene rocks: basalts

Kamloops Group: Tranquille Formation, sediments

Kamloops Group: undivided volcanic rocks

Unnamed Eocene rocks: feldspar porphyritic rocks

Battle Bluff Plutonic Complex: diabase

Mesozoic

Unnamed Triassic to Jurassic rocks: ultramafic

Unnamed Triassic to Jurassic rocks: dioritic

Unnamed Triassic rocks: granodioritic

Iron Mask Batholith (Triassic-Jurassic)

Cherry Creek Unit

Poohook Unit

Sugarloaf Unit

Hybrid Unit

Nicola Group (Triassic)

Sediments

Volcanics

Western volcanic facies

Central volcanic facies

Eastern volcanic facies



Past Producer



Developed Prospect



NAD83 UTM Zone 10 North
Mapsheet 921

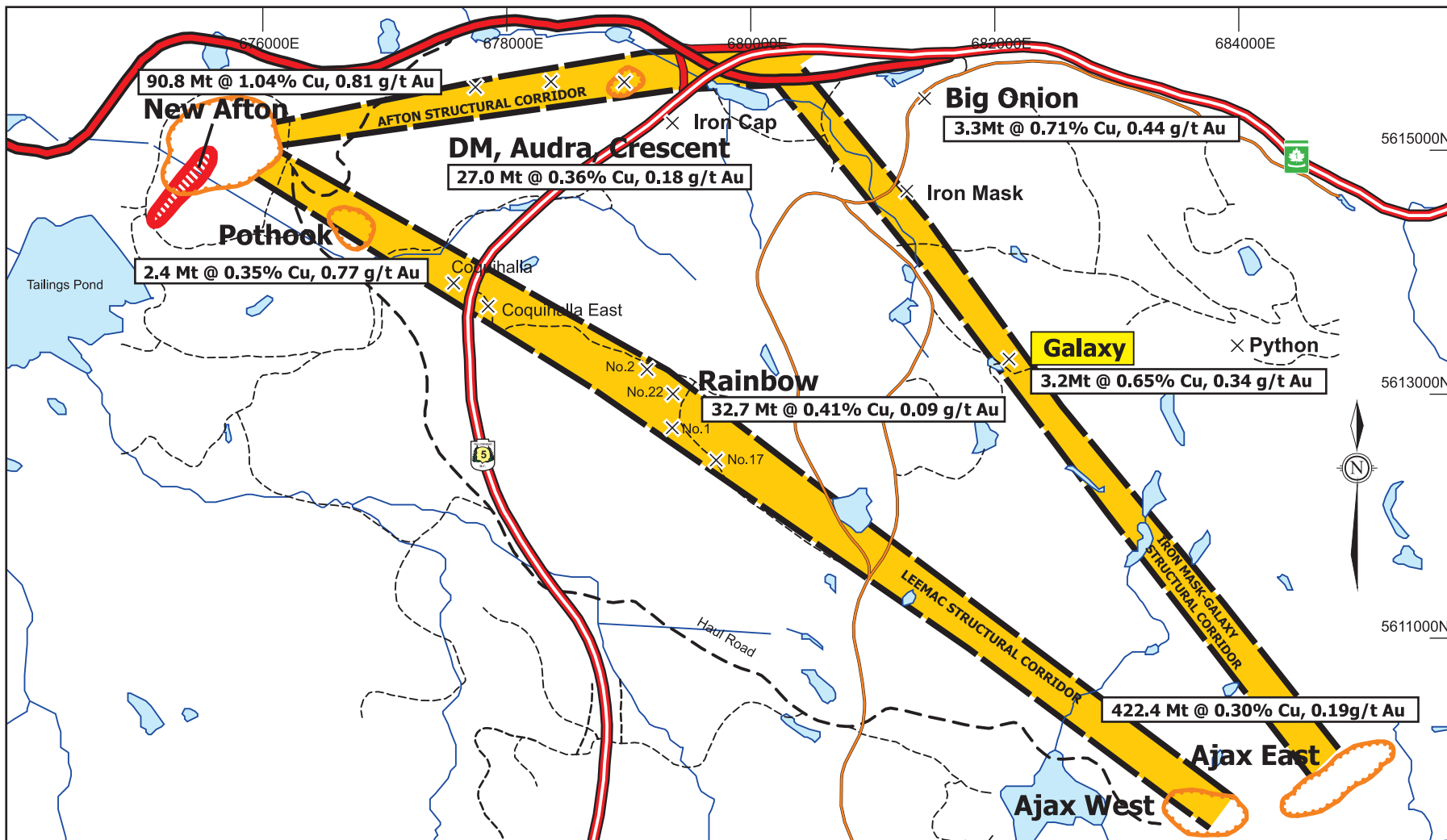
DISCOVERY-CORP ENTERPRISES INC.

REGIONAL GEOLOGY MAP




Galaxy Project
Kamloops M.D., British Columbia, Canada

Project:	P66	By:	TV
Scale:	1:250,000	Drawn:	TV
Figure:	3	Date:	December 2009






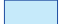


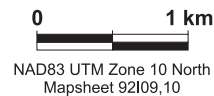


LEGEND

-  Open pit
-  Deposit or prospect
-  Favourable structural corridor

Topography

-  Freeway
-  Highway
-  Secondary paved road
-  Other roads
-  Watercourse
-  Waterbody




DISCOVERY- CORP ENTERPRISES INC.

ECONOMIC SETTING

Galaxy Project
 Kamloops M.D, British Columbia, Canada

Project:	P66	By:	TV
Scale:	1:50,000	Drawn:	TV
Figure:	4	Date:	December 2009



The Iron Mask batholith is a northwest-trending body, comprised of two separate plutons, the southern Iron Mask pluton (22 kilometres long by 3-5 kilometres wide) and the smaller (5 by 5 kilometres) Cherry Creek pluton to the northwest. The Galaxy property is situated within the Iron Mask pluton, which also hosts the Afton, Ajax and numerous other deposits. The pluton was emplaced at the end of the Triassic, over a relatively short time interval from about 210-200 Ma (Logan *et al*, 2006a).

Snyder and Russell (1995), Logan and Mihalynuk (2006) and others subdivide the Iron Mask into three distinct mapable units, the Sugarloaf, Cherry Creek, and Pothook phases. A fourth, hybrid phase is also noted. All of these units contain magnetite, typically from 3% to 15%.

Pothook phase: is a medium to coarse-grained biotite pyroxene diorite and is the earliest recognized phase of the intrusion.

Sugarloaf phase: is a fine-grained, porphyritic hornblende diorite, which occurs dominantly along the western margin on the batholith.

Cherry Creek phase: predominates in the northern and eastern portion of the batholith, and is a biotite monzonite to monzodiorite. Darney *et al* (2005b) note its textural similarity to the Pothook phase, and its common distinct pinkish colour due to K-feldspar alteration.

Hybrid phase: is a xenolith-rich unit, which represents variable assimilation of the Nicola Group rocks by the Pothook or Sugarloaf phases. It can contain as much as 80% fragments of Nicola Group rocks within an intrusive breccia. Textural and mineralogical characteristics of the Hybrid phase vary considerably.

The Cherry Creek and Sugarloaf phases are seen only in fault contact and the age relationship between them is uncertain. Both the Cherry Creek and Sugarloaf phases postdate the Pothook phase.

Saussuritized feldspars and widespread propylitic alteration are common within the Iron Mask batholith. Albite alteration occurs in highly fractured zones in all phases of the intrusion. Similarly, K-spar alteration occurs locally in all phases, but is most widespread in the Cherry Creek phase because of its higher primary potassic content. Copper-gold mineralization is most often associated with the Cherry Creek and Sugarloaf phases of the intrusion, and with contacts between these phases and the Pothook or Hybrid phases. The mineralization is typically associated with albite and/or K-spar alteration.

Structurally, the Iron Mask batholith is dominated by northwest-trending, high and moderate-angle faults. These faults have been interpreted as major deep seated structures that controlled deposition of the Nicola Group rocks and emplacement of the batholith (Logan *et al*, 2006a). As noted above, picrite is believed to have been tectonically emplaced along major fault zones within the Iron Mask batholith. The distribution of picrite defines several favourable structural corridors within batholith, as shown on Figure 5. Most of the deposits discovered to date are located within these favourable structural corridors, one of which passes through the Galaxy property and hosts known mineralization at the Galaxy zone.

Regionally, Late Triassic to early Jurassic calc-alkaline intrusives of dominantly granodiorite and quartz diorite composition cut the older rocks. These include the Guichon batholith, a

large composite intrusion with a surface area of 1000 square kilometres, located west-southwest of the Iron Mask batholith, with which porphyry copper/molybdenum mineralization at Highland Valley is associated.

In the western part of the map area, the Nicola rocks are overlain by arc-derived clastics of the Jurassic Ashcroft Formation.

Sediments and volcanics of the Eocene-aged Kamloops Group unconformably overlie the older rocks. The base of the Kamloops Group is a sedimentary unit consisting of conglomerate, tuffaceous sandstone, siltstone, shale and minor coal seams. Overlying the sediments are andesitic and basaltic volcanic flows and agglomerates. A thick sequence of Kamloops Group rocks separates the Iron Mask pluton from the Cherry Creek pluton to the northwest, in what has been described as a graben structure.

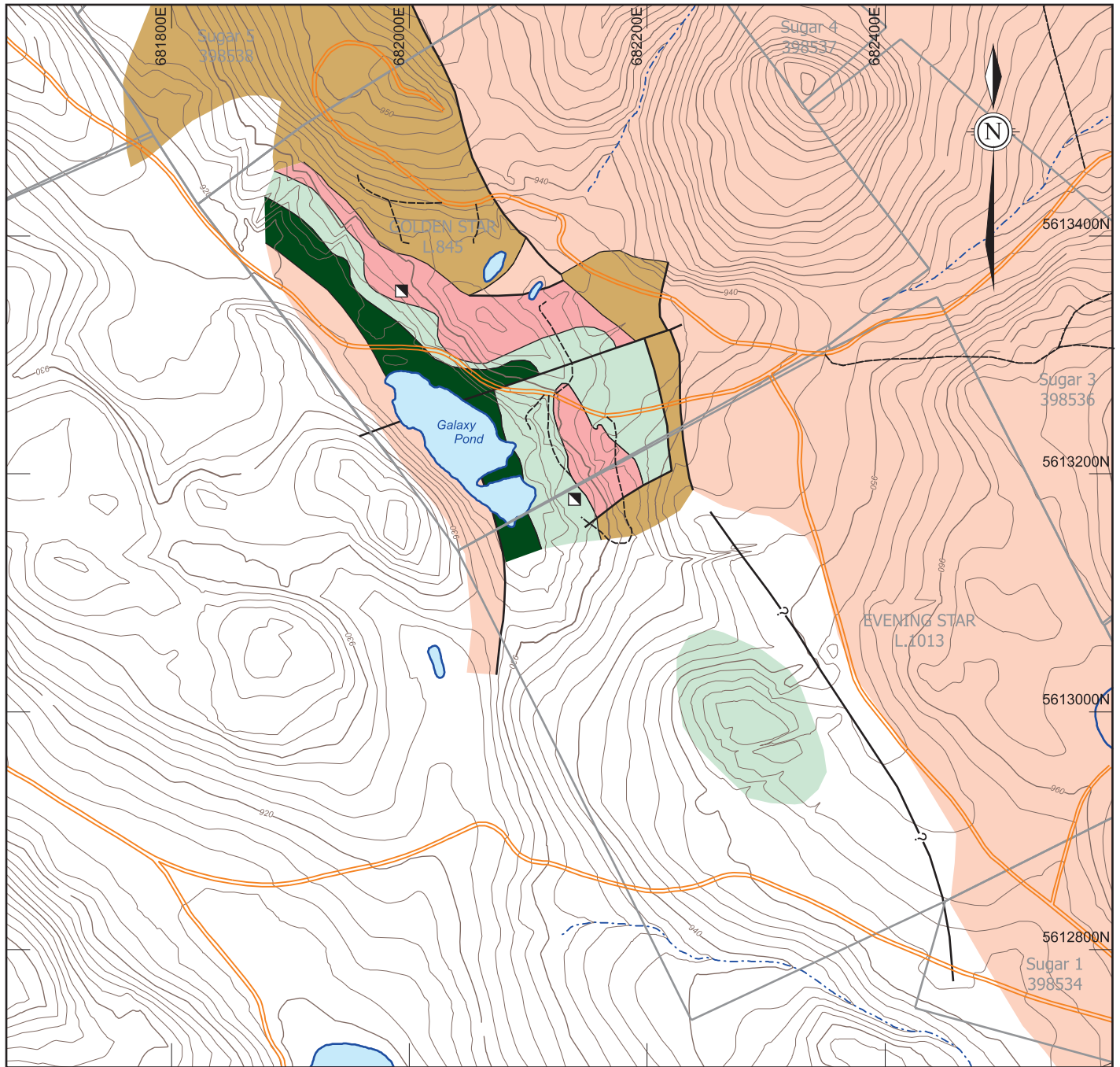
The youngest rocks in the area are Miocene-aged vesicular olivine basalts. The Miocene basalts are flat-lying plateau and valley basalts that locally overlie the older rocks.

6.2 PROPERTY GEOLOGY

The Galaxy property is situated in the northeastern portion of the Iron Mask batholith, and along the favourable Iron Mask-Galaxy structural corridor, as shown on Figures 4 and 5. In a general sense, the property covers a fault-bounded pendant of Nicola volcanics, within the batholith. A detailed understanding of the geology of the property is hampered by the lack of outcrop, however the geology in the central part of the claims, at the Galaxy zone, is well known from drilling (Evans, 1996; McArthur and Girling, 1987; Blanchflower, 1978; Belik, 1990). The geology of this part of the property is shown in plan view in Figure 5. Details regarding the mineralization are discussed in Section 8.0 of this report.

A northwest trending band of picrite occurs along the western property boundary, and marks the position of a major steeply dipping, northwest-trending fault. West of the fault, Cherry Creek phase is exposed, while to the east, Nicola volcanics, Sugarloaf and Hybrid phases occur above a zone of highly foliated, red (hematitic) mylonite, which Preto (1967) describes as “several feet thick”. The mylonite occurs along a low-angle west-dipping fault that is believed to be part of the Cherry Creek thrust (Logan *et al*, 2006a; G. Evans, 2006 *pers. comm*). Albitized Cherry Creek monzodiorite, with typical hypabyssal textures, occurs at depth in the footwall of the thrust/mylonite zone, as well as on surface, east of the surface trace of the thrust fault. Preto (1967) describes the Cherry Creek phase in the vicinity of the Galaxy zone as a medium to fine-grained, pinkish-grey, quartz-bearing porphyritic rock with widespread strong albite alteration. The altered rock is buff to light grey in colour, with a pinkish cast, and may contain veinlets of quartz and carbonate. Both K-spar and mafic minerals are typically absent. Fractures and slip planes are typically hematitic.

Mineralization at the Galaxy zone occurs in the hanging-wall of the thrust/mylonite zone, within the Sugarloaf phase and within Nicola volcanics. The area is structurally complex, with several steep faults that postdate the thrust fault and the mineralization.



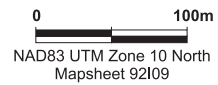
Modified from Caron (2006)

LEGEND
GEOLOGY

- Alluvium
- Iron Mask Batholith**
 - Cherry Creek Unit
 - Pothook Unit / Hybrid Unit
 - Sugarloaf Unit
- Nicola Group**
 - Volcanics
 - Picrite

SYMBOLS

- Fault
- Contact
- Shaft
- Galaxy Property Crown Grant / tenure names and numbers
- Gravel road
- Trail
- Intermittent creek
- Contours (2 metre interval)
- Waterbody



DISCOVERY CORP ENTERPRISES INC.

GEOLOGY PLAN MAP
Galaxy Property

Galaxy Project
Kamloops M.D, British Columbia, Canada

Project:	P66	By:	TV
Scale:	1:5,000	Drawn:	TV
Figure:	5	Date:	December 2009

CME

Relatively little is known about the geology of the property outside the Galaxy zone.

7.0 MINERALIZATION

The following information has been drawn from the NI43-101 Technical Report by L. Caron (2006).

The main area of mineralization on the Galaxy property is the Galaxy zone, situated on the Evening Star and Golden Star crown grants just east of the pond.

The Galaxy zone is an elongate, northwest-trending fault-bounded zone of mineralization, hosted within Nicola volcanics and Sugarloaf diorite. The zone measuring approximately 345 metres in length by 120 metres in width and is comprised of two discrete sections of mineralization, referred to here as the South Block and North Block. Mineralization is truncated at depth by a low-angle, west-southwest dipping thrust(?) fault. This low-angle fault surfaces approximately 90 metres east of the Evening Star shaft, and thus also forms the eastern boundary of the deposit. A northwest-trending zone of picrite marks the position of a major steeply-dipping, northwest-trending fault and defines the western faulted contact of the deposit. The deposit reached a maximum depth of 120 metres before it is cut-off by the western boundary fault.

West of the western boundary fault, Cherry Creek phase is exposed, while to the east, picrite, Nicola volcanics, Sugarloaf diorite and Hybrid phase occur in the hangingwall of the low-angle thrust fault. The thrust fault zone is marked by several feet of highly foliated, red (hematitic) mylonite. Albitized Cherry Creek monzodiorite, with typical hypabyssal textures, occurs at depth in the footwall of the thrust/mylonite zone, as well as on surface, east of the surface trace of the thrust fault.

The area is complexly faulted, with numerous faults that disrupt and offset the mineralized zone. One such fault is a 070°/90° trending fault that separates the South Block from the North Block. A second northeast trending fault just south of the Evening Star shaft trends at approximately 060°/45°N and truncates the South Block to the south, placing mineralized Sugarloaf phase above unmineralized Pothook and Hybrid phases. A low-angle north-dipping fault also forms the upper boundary of the North Block to the north, with unmineralized Cherry Creek intrusive in the hanging-wall of the fault, and mineralized Sugarloaf phase in the footwall. The South Block is a near-vertical zone of mineralization, while the North Block is a keel-shaped zone that has been rotated relative to the South Block.

Sulfide mineralization within the Galaxy zone consists primarily of pyrite, chalcopyrite and pyrrhotite, as fracture fillings and hairline to centimeter-scale veinlets, and as fine disseminations adjacent to fractures. Massive to semi-massive sulfide veins, locally exceeding one meter in width, occur within the mineralized zone. Pyrite and chalcopyrite also occur as blebs in orthoclase-albite-epidote veins with albitized and/or propylitic alteration envelopes, within intensely sheared zones. In general, mineralization appears to be best developed near the intersection of northwest and northeast fault zones.

Gold values are associated with the copper mineralization. For much of the historic drilling, gold results are unavailable. Teck noted difficulty in the 1996 drill program in duplicating gold values reported from earlier drilling. Evans (1996) shows copper grade only on the 1996 compilation of drilling. Results of up to 3.53 g/t Au and 7.56% Cu over 6.09 metres were reported from the 1990 reverse circulation drill program (hole 90-7, Belik, 1990).

More typical gold values from the 1990 program are in the 0.1 to 0.9 g/t Au associated with 0.3-3.0% Cu. Drilling in 2006 noted a similar range of gold grades. The highest gold grade encountered was 1.47 g/t Au associated with 2.77% Cu (drill hole GX06-1).

8.0 DATA COMPILATION

Discovery-Corp supplied CME with a CD-ROM, which contained four folders:

1. 2006 Data
2. 2007 Data
3. Galaxy AR's and Prop Files
4. Teck Database

The 2006 and 2007 Data folders contained assessment reports and raw data of exploration programs conducted by Discovery-Corp.

The third folder contained historical assessment reports and provincial property files related to the Galaxy Property.

The Teck Database folder contained two sub-folders:

1. Gemcom
2. Teck Maps

The Gemcom folder contained a variety of Gemcom files plus a Microsoft Access database. The Teck Maps folder contained a series of drill hole cross sections, longitudinal sections and plan maps.

The Gemcom files could not be viewed, as they could not be imported into the mining software used by CME (Micromine). The Microsoft Access database could be viewed and was found to contain six tables:

1. DrillholeA_Header: Collar locations and drill hole depths;
136 drill collars, 15,511.80 metres
2. DrillholeA_Survey: Down hole surveys;
262 records
3. DrillholeA_Assay: Drill hole sample results;

- 4,381 records
- 2,114 core copper assays
- 1,599 sludge copper assays
- 116 core and sludge copper assays
- 817 core gold assays
- 4. DrillholeA_Litho: Drill hole geology;
 - 668 records
 - 77 drill holes
 - 651 records with geology information
- 5. DrillholeA_Catalog: Definition table used by Gemcom; and
- 6. DrillholeA_Definition: Definition table used by Gemcom.

The plan, cross and longitudinal sections within the Teck Maps folder appear to have been generated in, and outputted from, Gemcom mining software with geological and mineralization interpretation hand-drawn onto each section. The data presented on these figures is consistent with the data reported in the Microsoft Access database.

8.1 VERIFICATION AND VALIDATION

Data from the original Access database was imported into Micromine for validation, modelling and presentation.

During the validation process, the following issues were noted:

1. The 2006 Discovery-Corp drill data was missing;
2. All drill collars coordinates were reported in a mine grid with no reference to UTM or longitude-latitude coordinates;
3. No indication of how drill collar elevation was determined;
4. No identification of the type of drill holes in the database (i.e. diamond, reverse circulation);
5. Lack of down-hole survey data;
6. Copper assay data was reported in two columns, one with the suffix “C” and the other with and “S” and no documentation as to what they represented;
7. All sample result fields contained a default value of 0.00 in the absence of a geochemical value. It was not possible to determine if this represented a below detection limit value or an unsampled interval;
8. Sample tag numbers were absent for all reported geochemical samples;
9. Lithological data consisted of an alpha-numeric coding with no reference to a legend; and,
10. Lithological data was incomplete.

Verification and validation of the data from the Access database was undertaken by locating and reviewing all available original data including drill logs, certificates of analysis, cross-sections and reports (“Source Data”).

Drill logs for the 1996 drilling were located and certificates of analysis for all but two holes were recovered. Further maps, drill sections and notes on the early drilling exploration (1961-1967) were located in the provincial property file for Galaxy (92I-NE-007).

Examination and comparison of the Source Data with data from the Access database resulted in the discovery of other discrepancies. These included:

1. mislocated drill collars (6 holes)
2. errors in sample intervals (10 holes)
3. incorrectly reported grades (8 holes)

The Source Data was treated as more reliable than data from the Access database except in two cases where collar locations appeared to be incorrectly located and the source data was not conclusive enough to make a correction. The data from Access database were used (drill holes S-20 and G-23).

All corrections were made to the Micromine database. The original Access database was not modified in any way. Entries and/or corrections made to the dataset include:

1. 2006 Diamond Drilling Data

Data from the source files of the 2006 diamond drilling program by Discovery-Corp was manually entered into Micromine. Data entered included collar, survey, assay and lithology information taken from the assessment report and logs.

GPS surveying during a site visit located posts marked drill hole GX06-1 and GX06-3. A post for GX06-2 was not located, although the foresight for this hole was identified. This hole was located just off the main roadway (J. Lyons, *pers comm.*). The collar position was derived by calculating a point located 065° azimuth from the foresight to the former drill pad area as indicated by Mr. Lyons.

The surveyed position indicated that the northing coordinate of drill hole GX06-2 was incorrectly reported in the 2006 technical report. Surveying indicates that the collar is approximately 17 metres south of the location given in the technical report.

2. Collar Coordinate Conversion: Teck Mine Grid to UTM

The conversion of the mine grid coordinates into UTM grid space (NAD83, Zone 10 North) required and initial site visit to collect several GPS readings of existing drill collars. This site visit did identify several posts of 1996 drill collar locations. The data was collected using a Trimble GeoXT rover and differentially corrected using Trimble Pathfinder software. This survey determined the baseline for the mine grid to be at 335° Azimuth. Twenty-one points were surveyed, of which 7 were identifiable drill holes with mine grid coordinates. Using one

of these collars (G-96-14) as a common point of rotation, the mine grid coordinates were converted to UTM coordinates (25° counter-clockwise). A comparison was made with the other surveyed holes and their calculated position based on the conversion and is reported in Table 5.

Table 5: Comparison of Surveyed versus Calculated Coordinates

DDH	Teck Mine Grid		Surveyed Coordinates		Calculated Coordinates		Differences	
	East	North	Easting	Northing	Easting	Northing	East	North
G-96-05	3128	3400	682177.101	5613273.978	682172.168	5613265.731	4.933	8.247
G-96-11	3069	3449	682102.443	5613288.671	682097.988	5613285.205	4.455	3.466
G-96-14 (Common Point)	3059	3500	682067.371	5613327.201	682067.371	5613327.201	0	0
G-96-16	3112	3541	682095.242	5613389.661	682098.078	5613386.758	-2.836	2.903
G-96-22	3118	3611	682066.352	5613454.674	682073.933	5613452.736	-7.581	1.938
G-96-30	3101	3493	682108.869	5613342.618	682108.394	5613338.607	0.475	4.011
G-96-31	3027	3545	682018.660	5613353.329	682019.351	5613354.461	-0.691	-1.132

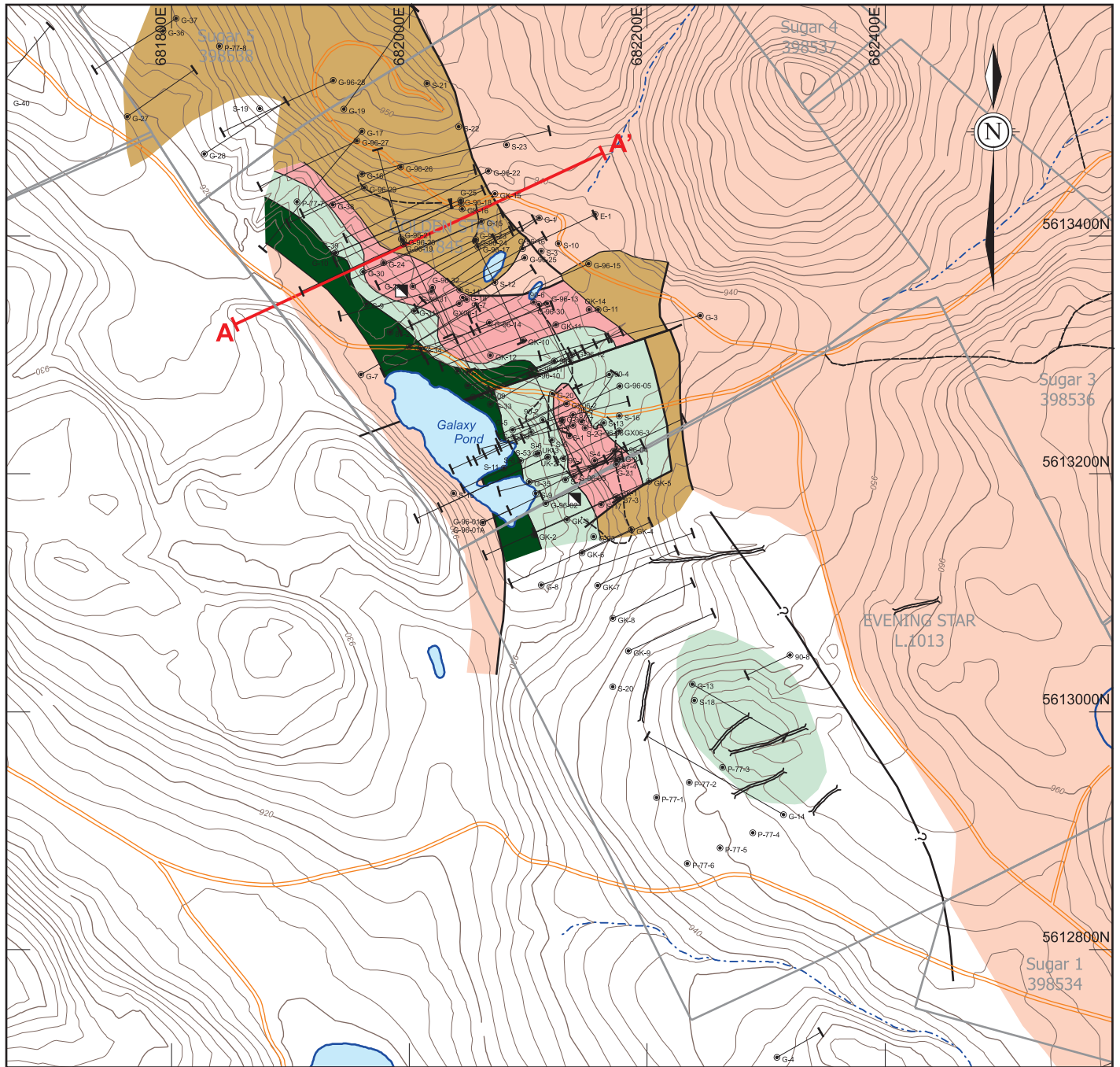
To further increase the accuracy of the drill hole collar database, a second field visit was undertaken to attempt to locate all identifiable drill collars on the property using the same GPS survey methods and equipment.

A total of 22 drill collars were identified and surveyed (4 of which had been previously surveyed). Four drill sites and/or collars were located but had no identifying tags. Based on surface plan maps of the drill collars, 3 could be reliably identified as the 1965 drill holes S-21, S-22 and S-23. The fourth may correspond to drill hole S-19 though the post in the field shows an inclined drill direction, whereas all historical records indicate that this drill hole was drilled vertically. The GPS coordinate was not used for this drill hole. The remaining drill holes were from the 1996 (16 holes) and 2006 drilling (2 holes) programs

All these GPS-derived UTM collar coordinates (excepting the probable S-19) have replaced the calculated UTM coordinates. Notes in the geodatabase indicate which holes have been differentially surveyed and which are based on a common point calculation.

Three drill hole collars are located off the current property, G-4, G-27 and G-40. Drill hole G-27 is collared approximately 10 metres off the Property and all core samples grading greater than 0.1% Cu are located within the Property. Drill holes G-4 and G-40 are completely drilled in ground off the Property. These holes have been retained in the Micromine collar database for completeness.

An updated drill hole plan map of the Property is presented in Figure 6.



LEGEND
GEOLOGY

- Alluvium
- Iron Mask Batholith**
 - Cherry Creek Unit
 - Pothook Unit / Hybrid Unit
 - Sugarloaf Unit
- Nicola Group**
 - Volcanics
 - Picrite

SYMBOLS

- P-77-5 Drill hole collar
- Fault
- Contact
- Shaft
- Galaxy Property Crown Grant / tenure names and numbers
- Cross section reference line
- Gravel road
- Trail
- Intermittent creek
- Contours (2 metre interval)
- Waterbody

0 100m
NAD83 UTM Zone 10 North
Mapsheet 92109

DISCOVERY-CORP ENTERPRISES INC.

DDH PLAN MAP
Galaxy Property

Galaxy Project
Kamloops M.D, British Columbia, Canada

Project:	C115	By:	TV
Scale:	1:5,000	Drawn:	TV
Figure:	6	Date:	December 2009



3. Elevation Data

Although elevations are reported in the Access database, no indication was made as to how the elevations were determined in the field. To create a common reference for calculating elevations of the drill collars, Eagle Mapping of Burnaby, BC was contracted to supply a digital terrain model (DTM) from airphotography with a 2 metre contour resolution. The Eagle Mapping DTM was converted into a surface wireframe DTM within Micromine. The drill collars were then draped over this surface and elevations calculated.

An orthophoto of the DTM area was also received along with topographic features in ArcGIS-ready shape files.

4. Drill Hole Types

No identification of the type of the drill hole was noted in the original Access database. Examination of the historical records identified the 1977, 1987 and 1990 drilling to be percussion / reverse circulation type holes. The 1961-1969, 1996 and 2006 drill holes are all diamond drill core holes. No information has been found on drill hole E-1, UK-2 and UK-3. A summary of the drilling is presented Table 6.

Table 6: Summary of drilling, Galaxy Deposit (modified after Caron, 2006)

Drill Hole	No. of Holes	Metreage	Type	Year	Operator
G-1 to G-40	40	5451.98	DDH	1961-64	Galaxy Copper
S-1 to -23, S-53	24	2429.15	DDH	1965	Sulmac
GK-1 to -16	16	1562.13	DDH	1969	Kimberly/United Bata
P-77-1 to -8	8	734.57	Percussion	1977	Canadian Superior
87-1 to -4	4	181.05	Percussion	1987	Abermin
90-1 to -8	8	649.22	Reverse Circulation	1990	Getchell
G 96-01, 1A, 02 to -32	33	4086.69	DDH	1996	Teck
GX 06-1 to -3	3	285.26	DDH	2006	Discovery-Corp
E-1	1	123.44	unknown	unknown	unknown
UK-2, 3	2	296.57	unknown	unknown	unknown
Total:	139	15800.06			

5. Lack of Downhole Survey Data

No documentation was available to determine if downhole surveys were made to account for azimuth and dip deviations of the drill hole. Drill hole orientation data in the original Access database showed that of the 139 drill holes:

1. 20 holes recorded with only a collar measurement;
2. 90 holes recorded with a collar and end of hole measurements but no change noted in dip;

3. 23 holes recorded with a collar and end of hole measurements and change noted in dip; and,
4. 6 holes recorded with a collar, intermediary and end of hole measurements and change noted in dip.

The latter two groups represent the 28 of the 33 drill holes by Teck in 1996 (G-96-series) and 1 of 16 drill holes by Kimberly/United Bata in 1969 (GK-series).

Survey methodology was not available. No measurements of downhole azimuth change were carried out on any drill holes.

Two drill holes, S-7 and S-9 are recorded in the Teck database with azimuth of 024°. This does not match the historical cross sections from Galaxy Copper that show these being drilled at 065°. Handwritten collar data from the provincial property file lists azimuth as “*assumed N62°45'E*” for both holes, corresponding to an azimuth of 062.75°. These azimuths were applied to the Micromine drill hole survey database.

6. Copper Assay Reporting

The assay data of the copper values are stored in two columns noted as “CU %_(C)” and “CU %_(S)”. No documentation was available identifying what these columns specifically represented. Through investigation of the assessment reports and other data and it appears that the suffix “C” refers to a rock chip or core source of the sample material whereas the “S” refers to “sludge”.

In general, an assay is reported in only one of the two columns, but there are instances of assay values in both “C” and “S” columns. In the Micromine assay database, a new column was created, called CU_%_CLEAN to contain a master copper assay listing. Assay values from the “C” column and “S” column were copied into this new column. In the case where assays were reported in both the “C” and “S” columns, the “C” value was used.

7. Sample Assay Default Value of 0.00

It is believed that this is a by-product of the nature of storing data in a Microsoft Access database. All fields are required to contain some value (place-holder). In the case of the original database the default value was set as zero (0). This makes it difficult to determine whether an interval represents a sample with a below detection limit value or an unsampled section. There are 784 records in the database where both the Core/Chip and Sludge columns both report a 0.00 value. Cross-checking against original records was able to identify that 167 of these records represented intervals of no sampling, samples that should be reported as below detection limit, or incorrect sample intervals. Intervals representing non-sampled areas have been coded as “N/S” (not sampled) in the Micromine assay database. Sample intervals found to be below detection limit are reported as <0.01% Cu. Incorrect sample intervals were corrected as required.

Copper analyses of samples from the 2006 drilling were reported in ppm. Nine of the results reported values of under 50 ppm. These have been reported as <0.01% in the master copper assay listing (CU%_CLEAN).

The remaining 608 records contain a value of 0.00 that cannot be determined whether the value represents a quantitative value or is simply a place holder. These records represent drill holes from the G-series (1961-1964), and S-series (1965) and GK-series (1969). These values have been converted to a null or blank value in the Micromine assay database.

8. No Sample Tag Numbers Recorded

Related to the previous issue, the assay data as received contained no reference to the original sample tag number assigned to the sample. Searching through original logs and certificates and reports, it was possible to identify the original sample tag numbers for drilling from 1987, 1990, and 1996. This represents 632 samples. These sample tag numbers were entered into the geodatabase, along with certificate of analysis file/job numbers, if available.

9. Lithology Coding

The Access database lithology table only reported alpha-numeric codes for geology with no reference to what the codes represent. The Teck cross sections revealed a legend consistent with the numbers and letters as reported in the database. The coding consisted of a numeric lithology code followed by a letter(s) representing alteration style(s). Two lithologies with alteration modifiers may also occur as one lithological description.

10. Incomplete Lithological Coding

The Access database included coding for only 77 of the 139 drill holes on the property. Original cross sections, logs and reports were used to augment and add geological information into the Micromine geology database. Basic geological coding (lithology only) of a further 50 drill holes were added.

9.0 DEPOSIT MODELLING

To view the mineralization of the Galaxy deposit in three dimensions it was necessary to create a wireframe of the mineralization envelope. All wireframing was carried out using Micromine software.

9.1 METHODOLOGY

Once verification and validation of the database was complete using the available Source Data, Micromine was used to present the data on screen as sections and plans. The entire assay database was composited to 1 metre intervals. A grade of 0.1% Cu was selected as the mineralization envelope boundary, but other factors such as lithology and structural features were considered in the placement of the envelope. Examination of the data in cross section,

longitudinal section and plan views, digitizing the cross sections was determined to be the best method to describe the mineralization. Vertical holes in the deposit limit the use of level plans. A 25 metre section width was used for all sections.

9.1.1 Mineralization

Envelope strings were digitized on screen and snapped to the drill holes in each section. Due to paucity of drill data in certain areas, a best estimate of the mineralization boundary was digitized based on neighbouring sections. Strings were smoothed where appropriate using a point-honouring method (i.e. the snapped point is retained). Seventeen envelopes were generated representing 425 metres of strike length. Once the strings (envelopes) were completed, a wireframe was created by connecting the strings from each section. When completed, the wireframe ends were closed off.

9.1.2 Structural Features

The current geological model of the deposit has a west dipping thrust fault that terminates mineralization at depth. The thrust plane was digitized on each section that it could be reliably drawn using same methodology of snapping to drill holes. These lines were further “smoothed” using a point-honouring method. The individual strings were then joined to create a wireframe surface that could be used to clip the mineralization envelope.

A second plane was developed corresponding to the east-west fault that divided the mineralization into the north and south blocks. The actual dip of this fault is not clear from the drilling and is shown only for reference.

Lastly, the steep normal block fault that bound mineralization to the west was also digitized to create the western bounds of mineralization. On surface plan, this feature is offset by the aforementioned cross section. Two planes were required, one to the north of the cross fault and one to the south.

9.1.3 Topography

The topographic surface wireframe generated from the DTM supplied by Eagle Mapping was used to trim the mineralization and fault wireframes to the ground surface.

9.2 RESULTS

The resultant mineralization wireframe shows a fairly erratic shape. Some of the erratic nature can be attributed to lack of complete sampling in some drill holes and also to the lack of downhole survey data, specifically azimuth deviations. In both the northern and southern ends of the mineralization, limited drill data also makes definition of the envelope subjective. Further drilling would be required in these areas to more reliably define the mineralization envelope boundaries.

Examples of the wireframe output are presented in Figures 7 and 8. A representative two-dimensional cross section is presented in Figure 9 to illustrate the relationship between lithology, structure and mineralization.

10.0 DISCUSSION

As reported in section 8.1, numerous errors were noted in the data received on the CD-ROM. Through the collection and subsequent verification with original data such as drill logs and assay sheets, many of these errors were corrected. However, because not all of the original source data was located and the lack of reporting within the source documents (i.e. no down hole surveys), issues still remain with the revised database.

Field checks have verified the locations of several Sulmac (1965), Teck (1996) and Discovery Corp. (2006) drill hole collars. Based on historical data, two drill holes are located off the current property. These drill holes have no bearing on the current modelling of the deposit.

All data within the revised database was used to define the mineralized envelope, regardless of issues such as non-field verified drill collars and other unresolvable issues noted during the verification and validation process.

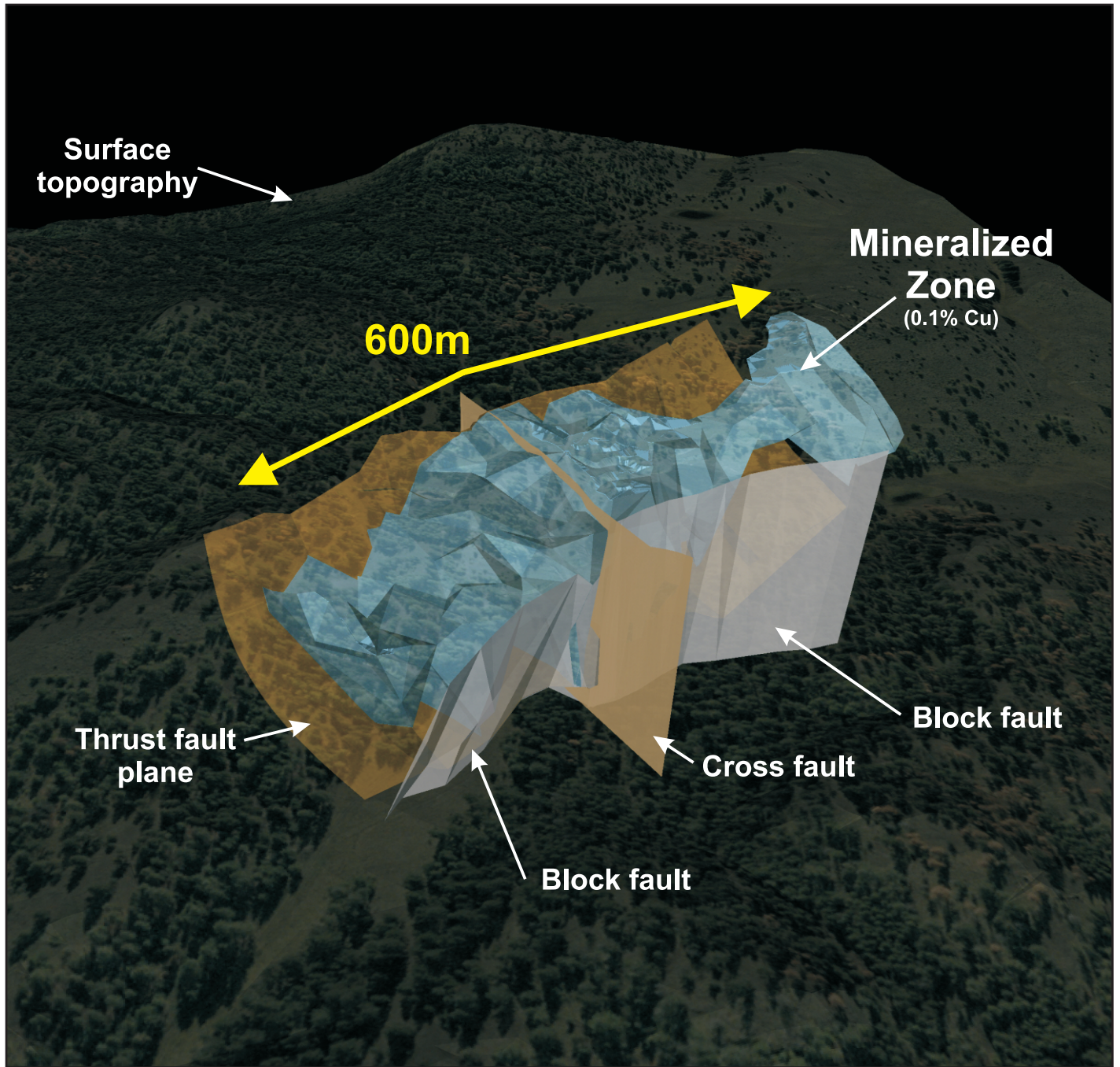
Lithological coding of the drill holes based on all the available information does not produce a very consistent geological interpretation. Although broad generalizations can be made, there is little continuity in the identification of, in particular, the Pothook, Sugarloaf and Hybrid phases of the Iron Mask batholith. As the 2006 drill core is available, a search for the 1996 drill core should also be attempted for relogging and creating a more consistent legend. Any older core or chips are not expected to be found.

11.0 CONCLUSIONS

The Galaxy Deposit is located in the productive Iron Mask copper gold camp, just outside the city of Kamloops, BC. Notable deposits of this area include the former open pit Afton Mine and the newly developed underground New Afton deposit located 7 km northwest and the Ajax deposits located 4 km to the southeast.

The Galaxy Deposit is a modest copper-gold alkaline porphyry deposit, located along the Iron Mask-Galaxy Structural Corridor. This shallow deposit occurs within an complex trough-like structural environment, bounded by steep, normal block faults on the west and a shallow to moderate west-dipping thrust(?) plane that truncates mineralization at depth.

In this study, wireframes of the mineralization and key structural features were developed using all known drill hole data. No reinterpretation of historical data or of the geological model has been undertaken.



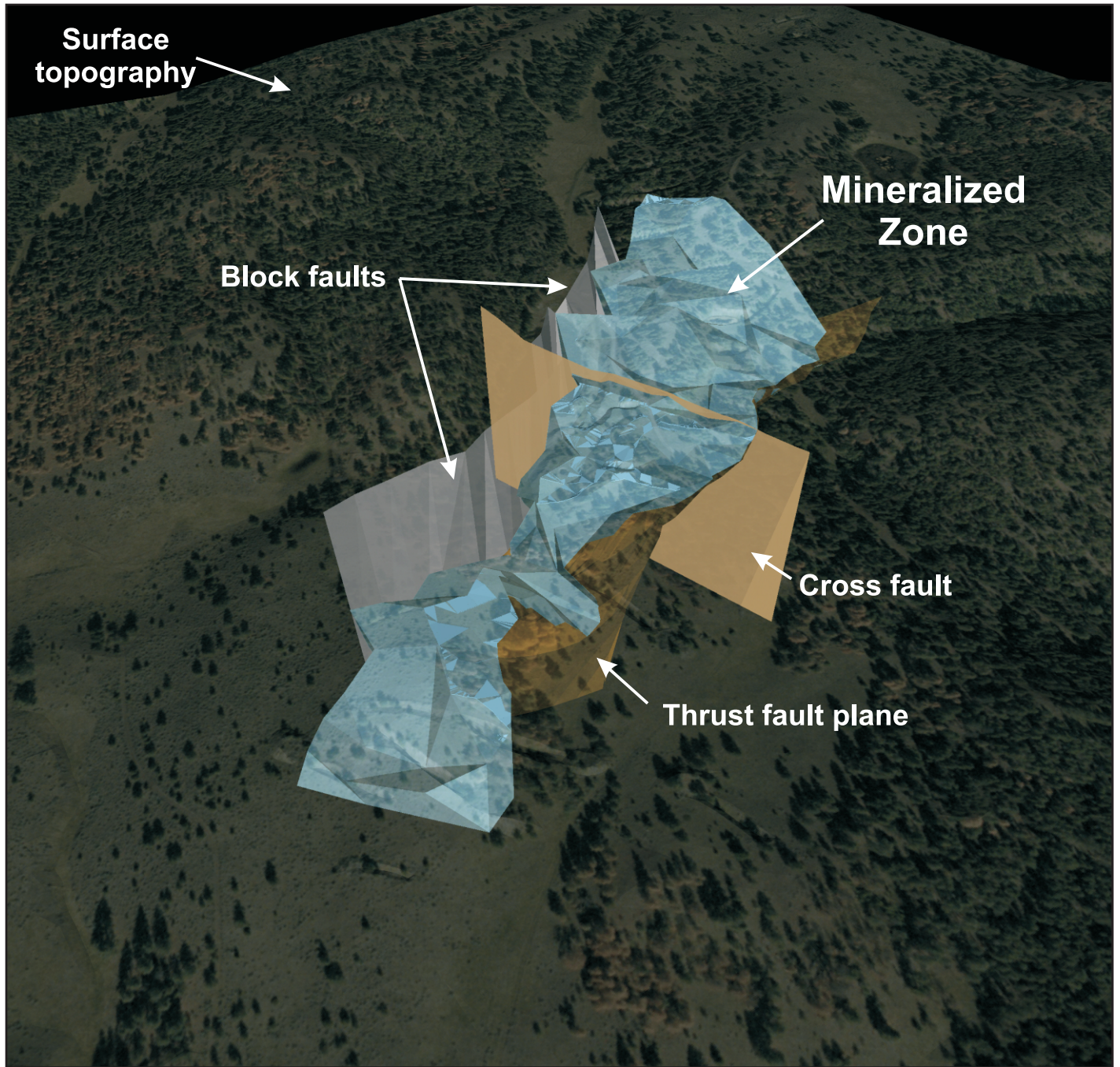
DISCOVERY CORP ENTERPRISES INC.

3D VIEW
Looking Southeast
Galaxy Deposit

Galaxy Project
 Kamloops M.D., British Columbia, Canada

Project:	P66	By:	TV
Scale:	schematic	Drawn:	TV
Figure:	7	Date:	December 2009





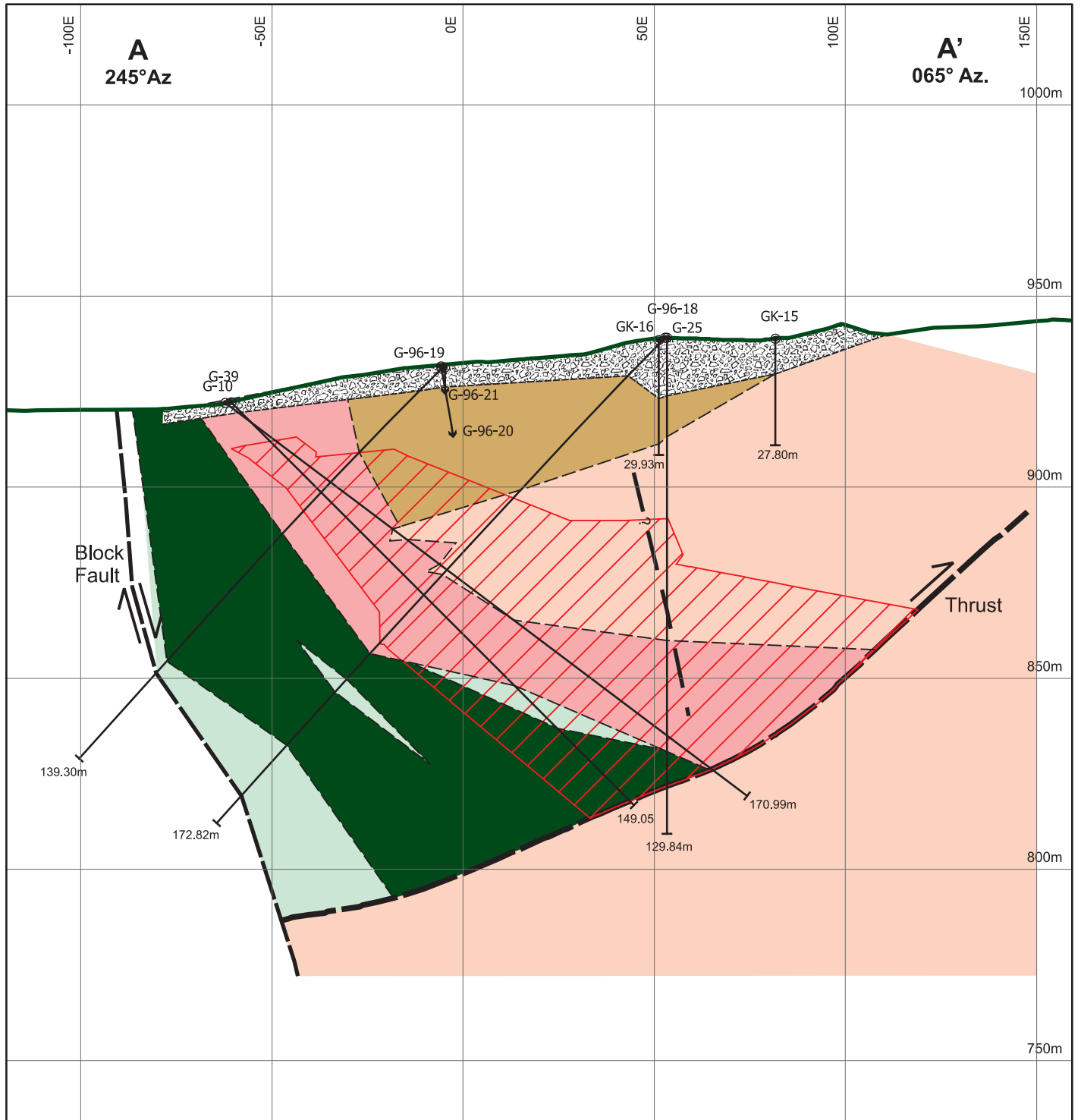
DISCOVERY- CORP ENTERPRISES INC.

3D VIEW
Looking Northwest
Galaxy Deposit

Galaxy Project
 Kamloops M.D, British Columbia, Canada

Project:	P66	By:	TV
Scale:	schematic	Drawn:	TV
Figure:	8	Date:	December 2009





LEGEND
GEOLOGY

- Overburden
- Iron Mask Batholith**
 - Cherry Creek Unit
 - Pothook Unit / Hybrid Unit
 - Sugarloaf Unit
- Nicola Group**
 - Volcanics
 - Picrite

SYMBOLS

- DDH name, trace and depth
- DDH trace entering/exiting section
- Significant intersection (outside of mineralization envelope)
- Geological contact
- Fault
- Mineralized zone (0.1% Cu)

DISCOVERY-CORP ENTERPRISES INC.

DRILL HOLE CROSS SECTION

A - A'
Galaxy Deposit

Galaxy Project
Kamloops M.D, British Columbia, Canada

Project:	P66	By:	TV
Scale:	1:1,500	Drawn:	TV
Figure:	9	Date:	August 2009



The wireframes were developed from data received from Discovery-Corp and was augmented with other relevant sources of data to verify and validate the geodatabase. Field checks were carried out to verify drill hole locations.

Not all of the source data was located, so the entire database could not be fully verified. Since errors were identified during the verification and validation process using the available source data, the non-validated portions of the database could contain errors. In some cases, data will not be able to be verified (i.e. historical drill locations, down hole survey azimuths).

The wireframe of the mineralization, based on a grade of 0.1% Cu, covers approximately 600 metres of strike length, with a maximum depth of approximately 140 metres. Caron (2007) notes the strike length to be 345 metres. The increase noted is due to inclusion of drill indicated mineralization along strike to the south. Mineralization is known to exist further along strike in both directions, but a paucity of drilling or other reliable data precludes extending the mineralization envelope at this time. This model also discounts any mineralization occurring below the thrust plane, although drill data for several historical holes report that copper mineralization (>0.1%) was encountered.

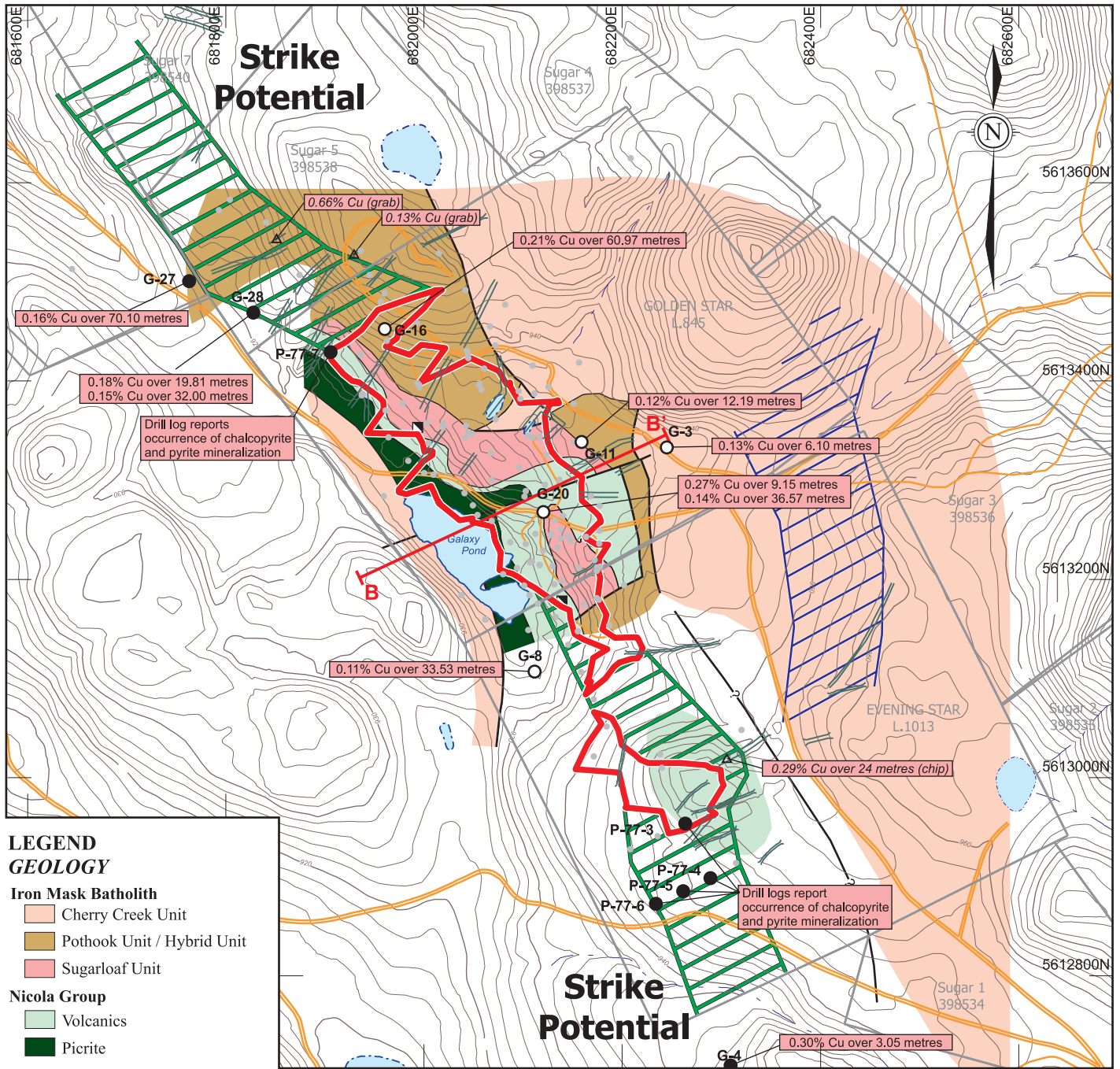
12.0 RECOMMENDATIONS

Examination of the data suggests potential to expand the mineralization along strike in both directions. Also, the data suggests that potential for mineralization exists at depth in the hanging-wall of the thrust fault. A map showing the areas of exploration potential is presented in Figures 10 (plan) and 11 (cross section).

Historical RC drilling (1977) 60 metres to the south encountered mineralized material (chalcopyrite + pyrite), however no samples were geochemically analyzed. Further south 60 metres off the Property, diamond drill hole G-4 encountered 0.20% Cu over 2.74 metres and 0.30% Cu over 3.05 metres. The shape of the mineralized envelope is poorly understood in this area and drilling will be required to properly refine its shape.

To the north, diamond drill holes G-27 and G-28 (approximately 160 metres and 80 metres north, respectively) encountered broad intersections of greater than 0.1% Cu but appear (in section) to be offset by close to 100 metres from the main Galaxy Zone trend. Intersections include 0.16% Cu over 70.10 metres (G-27), 0.18% Cu over 19.81 metres and 0.15% Cu over 32.00 metres (G-28). As in the south, mineralization shape is poorly defined and further drilling is required.

Drill hole G-20 reportedly encountered mineralization in the footwall of the thrust fault, within the Cherry Creek phase. Intersections include 0.27% Cu over 9.15 metres (111.25 to 120.40 metres) and 0.14% over 36.57 metres (147.83 to 184.40 metres). Similarly, drill hole G-16 encountered 0.21% Cu over 60.96 metres. Further north, drill hole G-16 also encountered copper mineralization below the interpreted thrust plane. An intersection of 0.21% Cu over 60.96 metres (149.35 to 210.31 metres) including 0.55% Cu over 3.10 metres (152.40 to 158.50 metres). Although the quality of the data is not known, this offers the



LEGEND
GEOLOGY

- Iron Mask Batholith**
- Cherry Creek Unit
 - Pothook Unit / Hybrid Unit
 - Sugarloaf Unit
- Nicola Group**
- Volcanics
 - Picrite

SYMBOLS

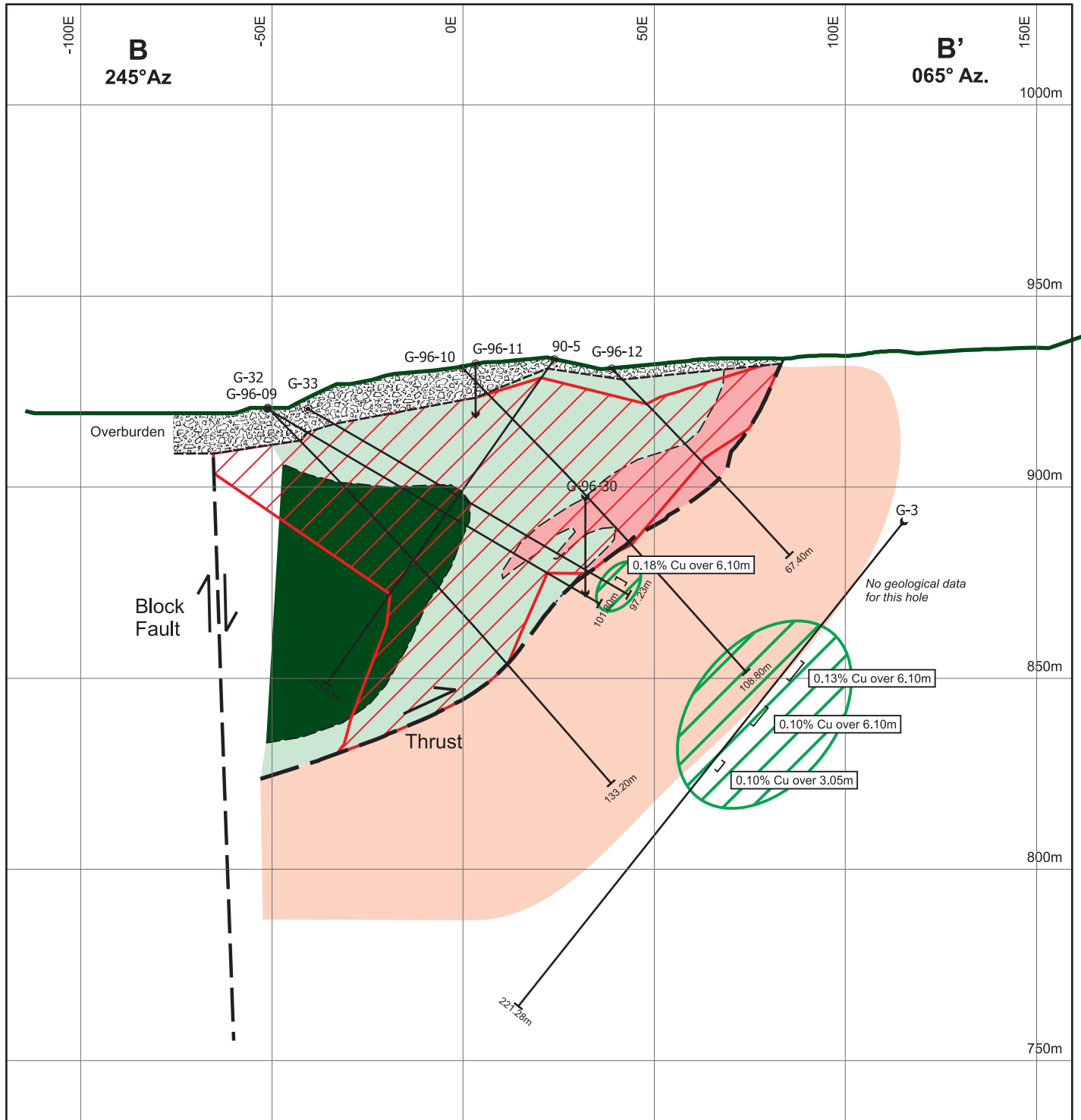
- Significant intersection encountered outside of mineralization envelope
- P-77-5 Drill hole with strike potential
- G-8 Drill hole with depth potential
(i.e. mineralization below thrust fault and in Cherry Creek intrusive)
- Selected surface sample (rock or trench)
- Mineralization envelope at 900 metres AMSL
- Strike and infill potential (does not indicate areas below the thrust)
- Geochemical anomaly outside of main trend
- Trench
- Gravel road
- Trail
- Intermittent creek
- Contours (2 metre interval)
- Cross section reference line
- Waterbody
- Galaxy Property Crown Grant / tenure names and numbers
- Shaft

0 100m
NAD83 UTM Zone 10 North
Mapsheet 92109

DISCOVERY CORP ENTERPRISES INC.

**EXPLORATION POTENTIAL
PLAN VIEW
Galaxy Property**
Galaxy Project
Kamloops M.D., British Columbia, Canada

Project: P66	By: TV
Scale: 1:6,000	Drawn: TV
Figure: 10	Date: December 2009



LEGEND
GEOLOGY

- Overburden
- Iron Mask Batholith**
 - Cherry Creek Unit
 - Pothook Unit / Hybrid Unit
 - Sugarloaf Unit
- Nicola Group**
 - Volcanics
 - Picrite

SYMBOLS

- DDH name, trace and depth
- DDH trace entering/exiting section
- Significant intersection (outside of mineralization envelope)
- Contact
- Fault
- Mineralized envelope (0.1% Cu)
- Exploration potential below thrust in Cherry Creek unit

DISCOVERY CORP ENTERPRISES INC.

**EXPLORATION POTENTIAL
CROSS SECTION**

B - B'

Galaxy Project
Kamloops M.D, British Columbia, Canada

Project:	P66	By:	TV
Scale:	1:1,500	Drawn:	TV
Figure:	11	Date:	December 2009



possibility of further copper mineralization at depth. The Cherry Creek phase is known to host copper mineralization elsewhere within the Iron Mask camp such as the DM zone (Figure 4)(Wardrop, 2009). Future drilling should include several holes to confirm the presence of this mineralization below the interpreted thrust.

Soil sampling also indicates areas outside the main mineralized area for follow-up. A cluster of samples returning greater than 264 ppm Cu are found to the east of the main deposit, covering a strike length of at least 150 metres, with potential extension of up to another 150 metres to the north.

Recommendations for expanding the resource along strike would include a series of holes south of the Galaxy zone. A set of two fences of two holes each at 50 metre centres beginning at the immediate south end of the mineralized envelope would test the area where historical RC drilling reports chalcopyrite mineralization. This would require approximately 420 metres of drilling. Drilling to the north should be initially carried out with a single fence of two holes 50 metres along strike from the northern end of the envelope. Approximately 250 metres would cover this.

One or two deeper holes should be considered to test/confirm for mineralization below the thrust fault. One hole collared near historical hole G-3 would test the mineralization reported in hole G-20. Another hole drilled approximately 200 metres north along strike would test an area indicated by hole G-16. A total of 400 metres of core would be required to complete these holes.

Core sampling should be completed over the entire core length of any new drill holes and assayed for copper and gold, as well as analyzed for multi-elements by ICP or total digestion methods. Due to the structural complexity, use of an oriented core survey tool is recommended to gather structural data.

Lack of down-hole survey data, especially in azimuth was a hindrance in the correlation of geological information from section to section. Any future drilling should ensure that all holes are adequately surveyed with an instrument capable of measuring both azimuth and dip deviations.

Poor drill core recovery is a recurring issue noted in the literature. Any future drilling should take this into consideration in order to maximize recovery. An increase in drill core size (e.g. HQ) may ameliorate the recovery problems.

Attempts have been made to locate the 1996 Teck drill core but as of the date of the report without success. If this core can be located it is recommended to be completely sampled. Holes drilled in the northern portion of the Galaxy zone by Teck were not adequately sampled in the areas that copper mineralization would be expected to occur. This will assist in bracketing mineralized zones and will greatly assist in refining the mineralized envelope. Additionally, the 1996 core should be relogged along with the 2006 Discovery Corp. drill core to create a consistent geological legend and interpretation. If this core cannot be located, at least one drill hole should be drilled through the main part of the deposit as verification of

historical grades. A series of infill drill holes are also recommended throughout the Galaxy zone to refine the mineralization extents. Approximately 980 metres of drilling would be required for the verification and infill drilling.

A total of 2,000 metres of diamond drilling is therefore recommended at an estimated cost of \$400,000. This is designed to potentially increase the size of the current deposit and will assist in the effort to move the deposit toward a NI 43-101 compliant resource.

Respectfully Submitted,



A handwritten signature in black ink, appearing to read 'C. O. Naas', is written over a circular professional seal. The seal is partially obscured by the signature and contains the text: 'PROFESSIONAL', 'PROVINCE OF', 'C. O. NAAS', 'COLUMBIA', and 'GEOLOGIST'.

Christopher O. Naas, P. Geo.
December 18, 2009.

13.0 REFERENCES

- Belik, G., 1990. Percussion Drilling Report on the Evening Star (L. 1013) & Golden Star (L. 845) Mineral Claims, Kamloops Mining Division, British Columbia, for Getchell Resources Inc., August 23, 1990. Assessment Report 20,242.
- Blanchflower, J.D., 1978. Topographic, Geophysical and Percussion Drilling Report on the Galaxy Property, Kamloops Mining Division, South Central British Columbia, for Canadian Superior Exploration Limited, May 31, 1978. Assessment Report 6,864.
- Carr, J.M., 1956. Deposits Associated with the Eastern Part of the Iron Mask batholith near Kamloops, *in* BC Minister of Mines Annual Report 1956, p. 47-69.
- Carr, J.M. and A.J. Reed, 1976. Afton: A Supergene Copper Deposit, *in* CIM Special Volume 15 -Porphyry Deposits of the Canadian Cordillera, p. 376-387.
- Cockfield, W.E., 1948. Geology and Mineral Deposits of Nicola Map Area, British Columbia. Geological Survey of Canada Memoir 249.
- Currie, J., 2004. Mineral Resource Estimate for the Afton Copper/Gold Project, Kamloops B.C., prepared by Behre Dolbear & Company, Ltd., for DRC Resource Corporation, May 2003 -updated January 2004.
- Darney, R., R. Friesen and G. Giroux, 2005a. Summary Report on the 2003 and 2004 Exploration Program and Mineral Resource Estimate on the Rainbow Property, Afton Area, for Abacus Mining & Exploration Corp., June 13, 2005.
- Darney, R., R. Friesen and G. Giroux, 2005b. Summary Report on the 2003 and 2004 Exploration Program and Mineral Resource Estimate on the Comet-Davenport Property, Afton Area, for Abacus Mining & Exploration Corp., June 13, 2005.
- Evans, G., 1996. Galaxy Project Drill Hole and Geology Plan (1:1000 scale) and Sections showing Geology and Cu Assays (1:500 scale). Unpublished maps and sections for Teck Exploration Ltd.
- Hallof, P. and M. Goudie, 1973. Report on the Induced Polarization and Resistivity Survey on the Makaoo Property, Kamloops Area, for Makoo Development Company Limited, January 29, 1973. Assessment Report 4,317.
- Kwong, Y.T.J., 1987. Evolution of the Iron Mask batholith and its Associated Copper Mineralization, BC Geological Survey Branch Bulletin 77.
- Lang, J.R., 1994. Geology of the Crescent Alkalic Porphyry Copper-Gold Deposit, Afton Mining Camp, British Columbia (92I/9), *in* BC Geological Fieldwork 1993, BC Ministry of Energy, Mines and Petroleum Resources Paper 1994-1, p. 285-296.
- Lang, J.R. and C.R. Stanley, 1995. Contrasting styles of Alkalic Porphyry Copper-Gold Deposits in the Northern part of the Iron Mask Batholith, Kamloops, British Columbia, *in* CIM Special Volume 46 -Porphyry Deposits of the Northwestern Cordillera of North America, p. 581-592.
- Logan, J.M., 2003. Iron Mask Project, Kamloops Area *in* BC Geological Fieldwork 2002, BC Ministry of Energy and Mines Paper 2003-1, p. 129-131.

- Logan, J.M. and M.G. Mihalynuk, 2006. Geology of the Iron Mask batholith. BC Geological Survey Open File Map 2006-11.
- Logan, J.M., M.G. Mihalynuk and C. Lowe, 2006b. Integrated Airborne Geophysical, Geology and Mineral Occurrence Data, Iron Mask batholith, Southern British Columbia. BC Geological Survey Open File 2006-12.
- Logan, J., M. Mihalynuk, T. Ulrich and R. Friedman, 2006a. Geology and Mineralization of the Iron Mask batholith. BC Geological Survey Branch GeoFile 2006-5.
- McArthur, G.F. and B.W. Girling, 1987. 1987 Percussion Drilling, Geological Mapping and VLF-EM Geophysics on the Galaxy Property, Kamloops Mining District, for Abermin Corporation, June 1987. Assessment Report 16,334.
- McCarthy, P., 2000. Report on the Galaxy Property, British Columbia, for Snowfield Resources Corp., December 15, 2000.
- Northcote, K., 1975. Geology of the Northwest Half of Iron Mask batholith (92I/9), *in* BC Geological Fieldwork 1974, BC Ministry of Energy, Mines and Petroleum Resources Paper 1975-1, p. 22-26.
- Northcote, K., 1977. Geology of the Southeast Half of Iron Mask batholith (92I/9), *in* BC Geological Fieldwork 1976, BC Ministry of Energy, Mines and Petroleum Resources Paper 1977-1, p. 41-46.
- Preto, V., 1967. Geology of the Eastern Part of the Iron Mask batholith, *in* BC Minister of Mines Annual Report 1967, p. 137-144.
- Ross, K.V., C.I. Godwin, L. Bond and K.M. Dawson, 1995. Geology, alteration and mineralization of the Ajax East and Ajax West copper-gold alkalic porphyry deposits, southern Iron Mask batholith, Kamloops, British Columbia, *in* CIM Special Volume 46 -Porphyry Deposits of the Northwestern Cordillera of North America, p. 565-580.
- Shives, R. and J. Carson, 1995. Airborne Geophysical Survey, Iron Mask batholith, British Columbia. Geological Survey of Canada Open File 2817.
- Snyder, L.D. and J.K. Russell, 1995. Petrogenetic relationships and assimilation processes in the alkalic Iron Mask batholith, south-central British Columbia, *in* CIM Special Volume 46 -Porphyry Deposits of the Northwestern Cordillera of North America, p. 593-608.
- Stanley, C.R., 1994. Geology of the Pothook Alkalic Copper-Gold Porphyry Deposit, Afton Mining Camp, British Columbia (92I/9,10), *in* BC Geological Fieldwork 1993, BC Ministry of Energy, Mines and Petroleum Resources Paper 1994-1, p. 275-284.
- Stanley, C.R., J.R. Lang and L.D. Snyder, 1994. Geology and Mineralization in the Northern Part of the Iron Mask batholith, Kamloops, British Columbia (92I/9,10), *in* BC Geological Fieldwork 1993, Paper 1994-1, p. 269-274.
- Wardrop, 2009. Ajax Copper/Gold Project, Kamloops, British Columbia: Preliminary Assessment Technical Report; August 4, 2009.

14.0 CERTIFICATE

I, Christopher O. Naas, *P. Geo.*, do hereby certify that:

1. I am a member in good standing of the Association of Professional Engineers and Geoscientists of British Columbia (Registration Number 20082);
2. I am a graduate in geology of Dalhousie University (*B.Sc.*, 1984); and have practiced in my profession continuously since 1987;
3. Since 1987, I have been involved in mineral exploration for precious and/or base metals in Canada, United States of America, Chile, Venezuela, Ghana, Mali, Nigeria, and Democratic Republic of the Congo (Zaire); for diamonds in Venezuela; and for rare metals in Nigeria. I have also been involved in the determination of base metal and gold resources for properties in Canada and Ghana, respectively, and the valuation of properties in Canada and Equatorial Guinea;
4. I am presently a Consulting Geologist and have been so since November 1987;
5. The opinions and conclusions contained herein are based on a review of previous records and the results of the current work program;
6. I visited the Galaxy Property twice during the course of this study;
7. I have read the definition of “qualified person” set out in National Instrument 43-101 and certify that by reason of my education, affiliation with a professional association and past work experience, I fulfil the requirements to be a “qualified person” for the purposes of National Instrument 43-101;
8. In the disclosure of any information relating to legal, title, taxation, environmental, socio-political and related issues, I have relied on information provided to me by Mineral Titles Online, Discovery-Corp Enterprises Inc. and from public domain sources.
9. I do not own direct shares of Discovery-Corp Enterprises Inc. I am independent of Discovery-Corp Enterprises Inc. in accordance of Section 1.5 of National Instrument 43-101;
10. I am not aware of any material fact or material change with respect to the subject matter of this report that is not reflected in this report, the omission to disclose which would make this report misleading. I reserve the right to amend or withdraw this report if there is a material change in any of the facts that I have relied upon.
11. I consent to the filing of this report with any stock exchange and other regulatory authority and the circulation of this report by Discovery-Corp Enterprises Inc. for the purpose of raising investment capital.

Dated at Richmond, British Columbia, this 18th day of December, 2009.



Christopher O. Naas, *P. Geo.*

APPENDIX I

ABBREVIATIONS AND CONVERSION FACTORS

ABBREVIATIONS

Elements		Abbreviations	
Ag	Silver	Az	azimuth
As	Arsenic	CDN\$	Canadian dollars
Au	Gold	ppm	parts per million
Ba	Barium	ppb	parts per billion
Cd	Cadmium	g/t	grams per metric tonne
Cu	Copper	oz/T	troy ounces per ton
Mo	Molybdenum	tpd	metric tonnes per day
Pb	Lead	Eq. Au	Gold equivalent
Sb	Antimony	UTM	Universal Transverse Mercator
Ti	Titanium	NAD83	North American Datum 1983
Zn	Zinc	° / ' / "	degree/minute/second of arc

CONVERSION FACTORS

Length			
1 millimetre (mm)	0.03937 inches (in)	1 inch (in)	25.40 millimetre (mm)
1 centimetre (cm)	0.394 inches(in)	1 inch (in)	2.540 centimetres (cm)
1 metre (m)	3.281 feet (ft)	1 foot (ft)	0.3048 metres (m)
1 kilometre (km)	0.6214 mile (mi)	1 mile (mi)	1.609 kilometres (km)
Area			
1 sq. centimeter (cm ²)	0.1550 sq. inches (in ²)	1 sq inch (in ²)	6.452 sq. centimetres (cm ²)
1 sq. metre (m ²)	10.76 feet (ft ²)	1 foot (ft)	0.0929 sq. metres (m ²)
1 hectare (ha) (10,000 m ²)	2.471 acres	1 acre	0.4047 hectare (ha)
1 hectare (ha)	0.003861 sq. miles (m ²)	1 sq. mile (m ²)	640 acres
1 hectare (ha)	0.01 sq. kilometre (km ²)	1 sq. mile (m ²)	259.0 hectare (ha)
1 sq. kilometre (km ²)	0.3861 sq. miles (mi ²)	1 sq. mile (m ²)	2.590 sq. kilometres (km ²)
Volume			
1 cu. centimetre (cc)	0.06102 cu. inches (in ³)	1 cu. inch (in ³)	16.39 cu. centimetres (cm ³)
1 cu. metre (m ³)	1.308 cu. yards (yd ³)	1 cu. yard (yd ³)	0.7646 cu. metres (m ³)
1 cu. metre (m ³)	35.310 cu. feet (ft ³)	1 cu. foot (ft ³)	0.02832 cu. metres (m ³)
1 litre (l)	0.2642 gallons (U.S.)	1 gallon (U.S.)	3.785 litres (l)
1 litre (l)	0.2200 gallons (U.K.)	1 gallon (U.K.)	4.546 litres (l)
Weights			
1 gram (g)	0.03215 troy ounce (20dwt)	1 troy ounce (oz)	31.1034 grams (g)
1 gram (g)	0.6430 pennyweight (dwt)	1 pennyweight (dwt)	1.555 grams (g)
1 gram (g)	0.03527 oz avoirdupois	1 oz avoirdupois	28.35 grams (g)
1 kilogram (g)	2.205 lb avoirdupois	1 lb avoirdupois	0.4535 kilograms (kg)
1 tonne (t) (metric)	1.102 tons (T) (short ton)	1 ton (T) (short ton) (2000 lb)	0.9072 tonnes (t)
1 tonne (t)	0.9842 long ton	1 long ton (2240 lb)	1.016 tonnes (t)
Miscellaneous			
1 cm/second	0.01968 ft/min	1 ft/min	50.81 cm/second
1 cu. m/second	22.82 million gal/day	1 million gal/day	0.04382 m ³ /second
1 cu. m/minute	264.2 gal/min	1 gal/min	0.003785 m ³ /minute
1 g/cu. m	62.43 lb/ cu. ft	1 lb/cu. ft ³	0.01602 g/m ³
1 g/cu. m	0.02458 oz/cu. yd	1 oz/cu. yd	40.6817 g/m ³
1 Pascal (Pa)	0.000145 psi	1 psi	6985 Pascal
1 gram/tonne (g/t)	0.029216 troy ounce/ short ton (oz/T)	1 troy ounce/short ton (oz/T)	34.2857 grams/tonne (g/t)
1 g/t	0.583 dwt/short ton	1 dwt/short ton	1.714 g/t
1 g/t	0.653 dwt/long ton	1 dwt/long ton	1.531 g/t
1 g/t	0.0001 %		
1 g/t	1 part per million (ppm)		
1 %	10,000 part per million (ppm)		
1 part per million (ppm)	1,000 part per billion (ppb)		
1 part per billion (ppb)	0.001 part per million (ppm)		